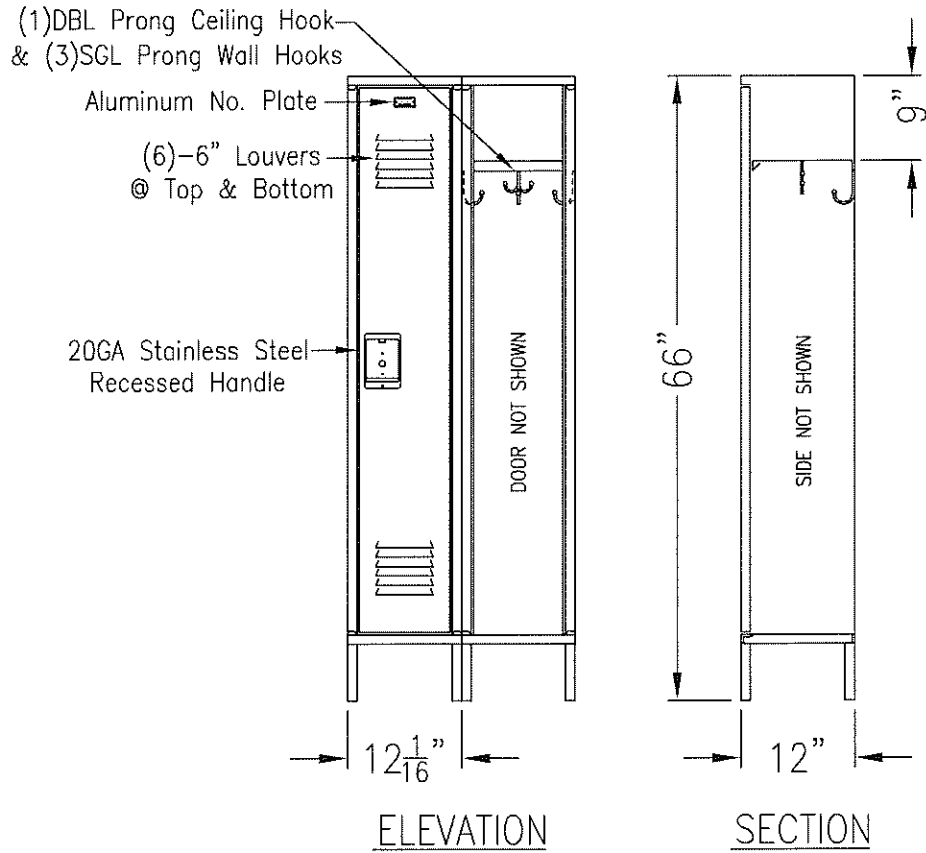


# Durable Single Tier Locker 66" High



### Standard Construction—Basis Of Design:

(If A Change In Gauge Thickness Is Required Pricing Is Available Upon Request)

- |                   |                       |
|-------------------|-----------------------|
| Top : 24 Gauge    | Door : 16 Gauge       |
| Back : 24 Gauge   | Door Frame : 16 Gauge |
| Side : 24 Gauge   | Shelf : 24 Gauge      |
| Bottom : 16 Gauge |                       |

### Door Ventilation Options:

- 6" Louvers, (6) @ Top And (6) @ Bottom
- 5/8" x 1-1/8" High Rectangular Perforations
- 5/8" x 1/4" High Mini Louvers
- Solid

### Locker Accessory Options:

- 24 Gauge Individual Slope Tops
- 4" Zee Base
- 18 Gauge Continuous Slope Hoods
- Base By Other
- 6" Legs

TYPICAL FOR 9" & 12" WIDE  
TYPICAL FOR 12" & 15" DEEP  
PLEASE ALLOW 1/16" GROWTH PER FRAME

This Drawing Shows A Standard WEC Product. All Drawings  
Are Copyright Protected By WEC Manufacturing. 07/13/11



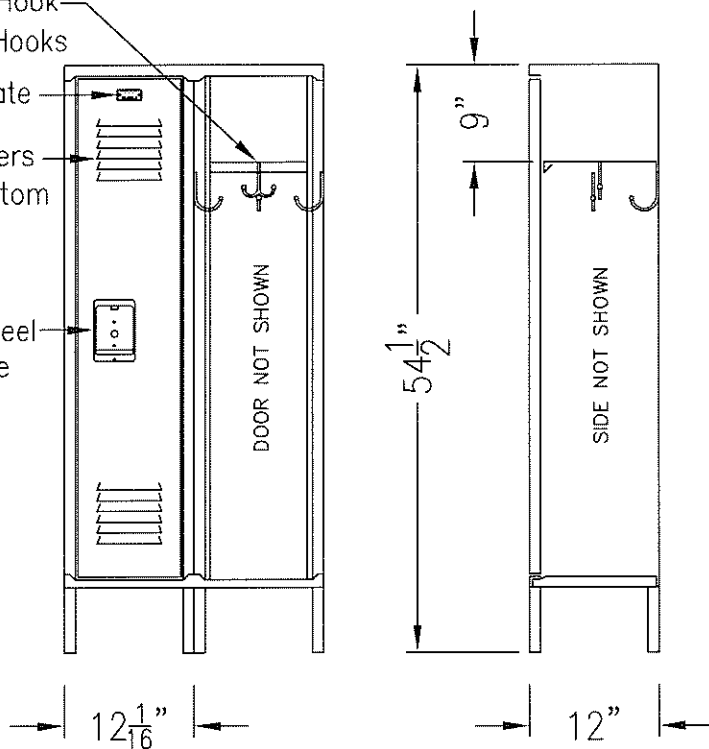
# Durable Single Tier Locker 54-1/2" High

(1) DBL Prong Ceiling Hook  
& (3) SGL Prong Wall Hooks

Aluminum No. Plate

(6)-6" Louvers  
@ Top & Bottom

20GA Stainless Steel  
Recessed Handle



ELEVATION

SECTION

TYPICAL FOR 9" & 12" WIDE  
TYPICAL FOR 12" & 15" DEEP  
PLEASE ALLOW 1/16" GROWTH PER FRAME

## Standard Construction-Basis Of Design:

(If A Change In Gauge Thickness Is Required Pricing Is Available Upon Request)

Top : 24 Gauge	Door : 16 Gauge
Back : 24 Gauge	Door Frame : 16 Gauge
Side : 24 Gauge	Shelf : 24 Gauge
Bottom : 16 Gauge	

## Door Ventilation Options:

- 6" Louvers, (6) @ Top And (6) @ Bottom
- 5/8" x 1-1/8" High Rectangular Perforations
- 5/8" x 1/4" High Mini Louvers
- Solid

## Locker Accessory Options:

- 24 Gauge Individual Slope Tops
- 4" Zee Base
- 18 Gauge Continuous Slope Hoods
- Base By Other
- 6" Legs

This Drawing Shows A Standard WEC Product. All Drawings  
Are Copyright Protected By WEC Manufacturing. 07/13/11



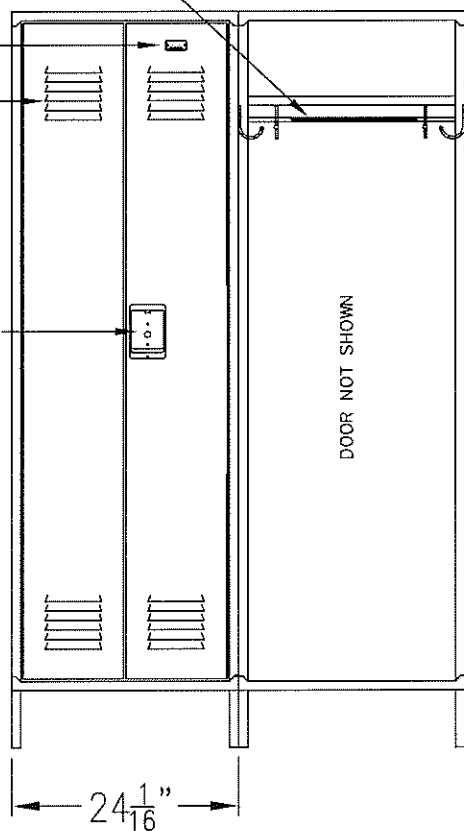
## Durable SGL Tier Locker W/ Double Doors 78" High

(1) Coat Rod & (4)  
SGL Prong Wall Hooks

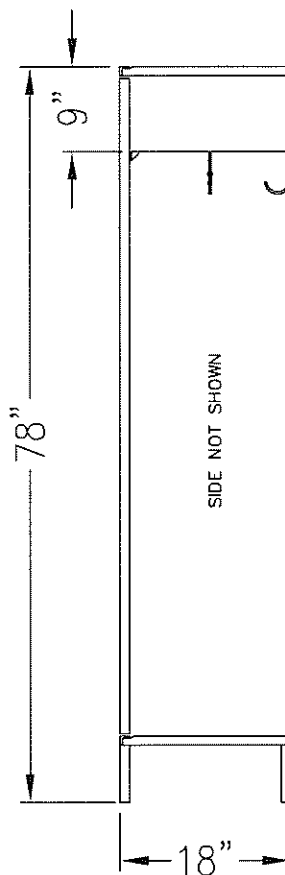
Aluminum No. Plate

(6)-6" Louvers  
@ Top & Bottom

20GA Stainless Steel  
Recessed Handle



ELEVATION



SECTION

TYPICAL FOR 24" WIDE  
TYPICAL FOR 18", 21" & 24" DEEP  
PLEASE ALLOW <sup>1</sup>/<sub>16</sub>" GROWTH PER FRAME

### Standard Construction—Basis Of Design:

(If A Change In Gauge Thickness Is Required Pricing Is Available Upon Request)

Top : 24 Gauge	Door : 16 Gauge
Back : 24 Gauge	Door Frame : 16 Gauge
Side : 24 Gauge	Shelf : 24 Gauge
Bottom : 16 Gauge	

### Door Ventilation Options:

- 6" Louvers, (6) @ Top And (6) @ Bottom
- 5/8" x 1-1/8" High Rectangular Perforations
- 5/8" x 1/4" High Mini Louvers
- Solid

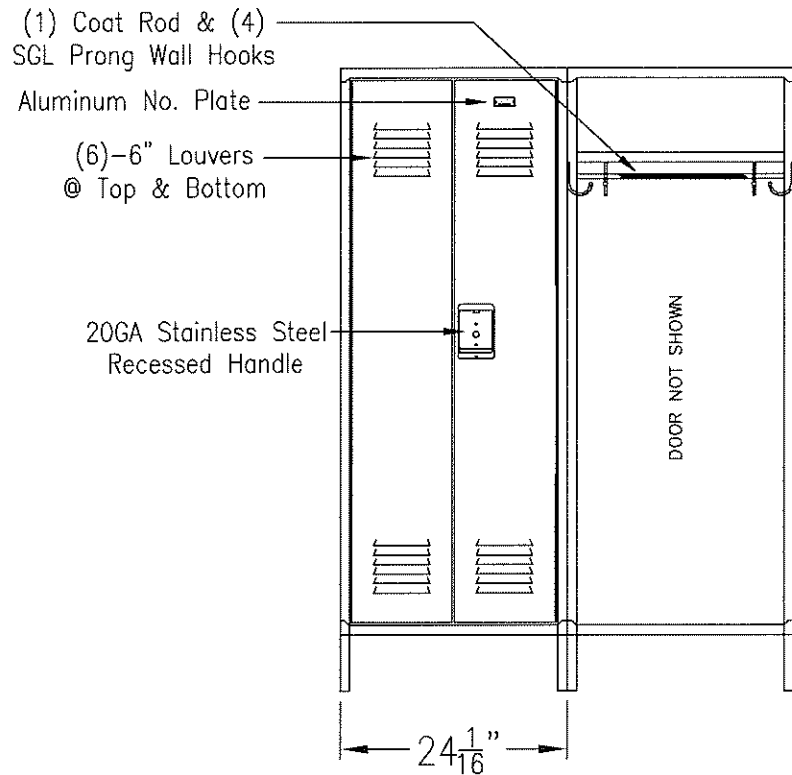
### Locker Accessory Options:

- 24 Gauge Individual Slope Tops
- 4" Zee Base
- 18 Gauge Continuous Slope Hoods
- Base By Other
- 6" Legs

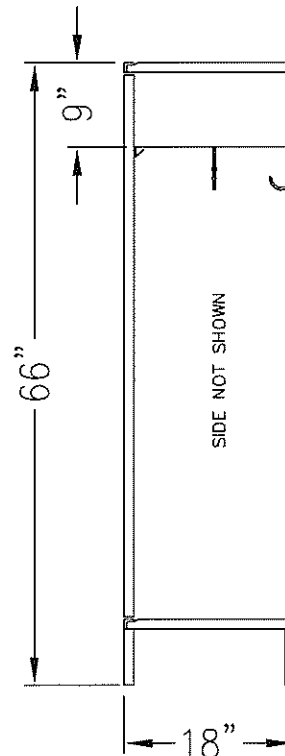
This Drawing Shows A Standard WEC Product. All Drawings  
Are Copyright Protected By WEC Manufacturing. 07/13/11



# Durable SGL Tier Locker W/ Double Doors 66" High



ELEVATION



SECTION

### Standard Construction—Basis Of Design:

(If A Change In Gauge Thickness Is Required Pricing Is Available Upon Request)

Top : 24 Gauge	Door : 16 Gauge
Back : 24 Gauge	Door Frame : 16 Gauge
Side : 24 Gauge	Shelf : 24 Gauge
Bottom : 16 Gauge	

### Door Ventilation Options:

- 6" Louvers, (6) @ Top And (6) @ Bottom
- 5/8" x 1-1/8" High Rectangular Perforations
- 5/8" x 1/4" High Mini Louvers
- Solid

### Locker Accessory Options:

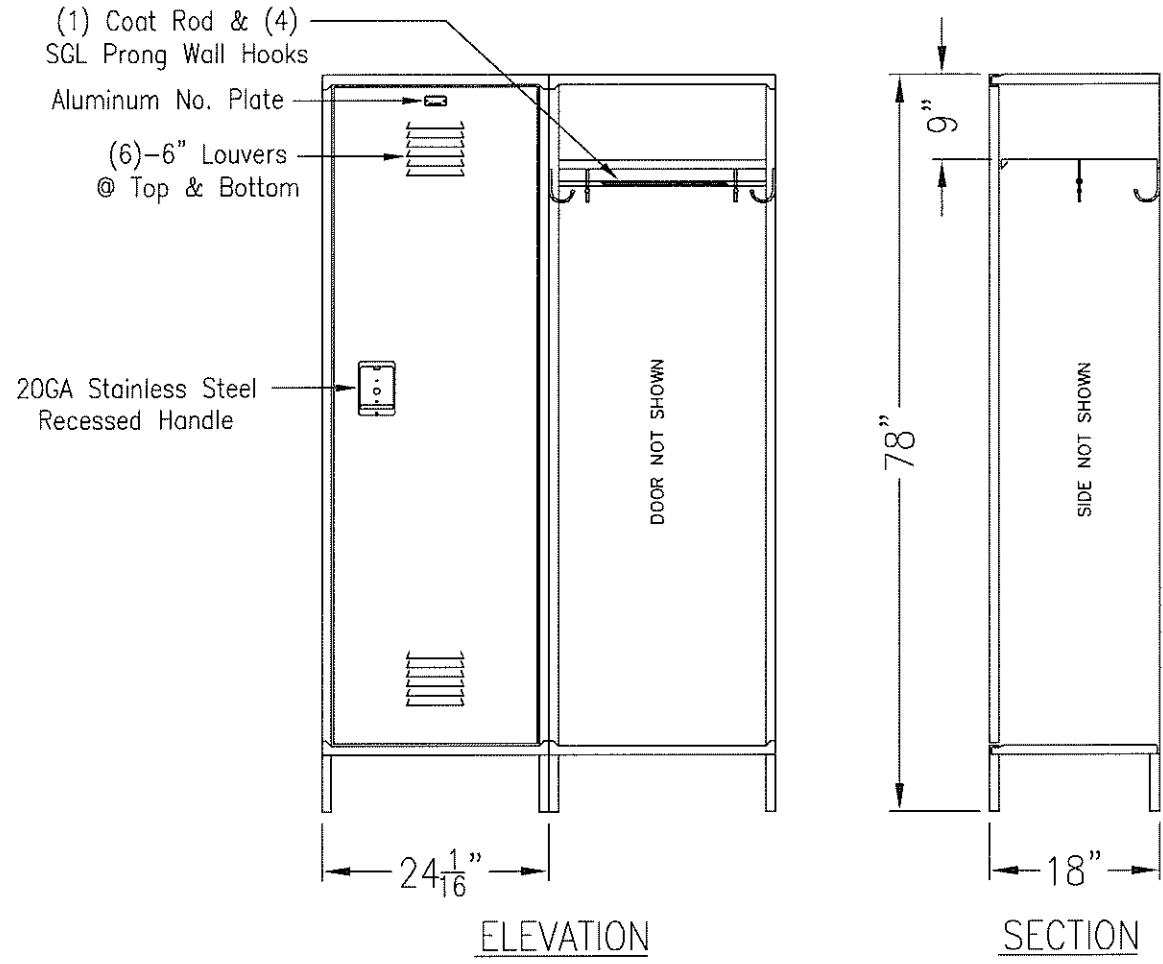
- 24 Gauge Individual Slope Tops
- 4" Zee Base
- 18 Gauge Continuous Slope Hoods
- Base By Other
- 6" Legs

24" WIDE  
TYPICAL FOR 18", 21" & 24" DEEP  
PLEASE ALLOW  $\frac{1}{16}$ " GROWTH PER FRAME

This Drawing Shows A Standard WEC Product. All Drawings Are Copyright Protected By WEC Manufacturing. 07/13/11



# Durable Single Tier Locker 78" High



### Standard Construction—Basis Of Design: (If A Change In Gauge Thickness Is Required Pricing Is Available Upon Request)

- |                   |                       |
|-------------------|-----------------------|
| Top : 24 Gauge    | Door : 16 Gauge       |
| Back : 24 Gauge   | Door Frame : 16 Gauge |
| Side : 24 Gauge   | Shelf : 24 Gauge      |
| Bottom : 16 Gauge |                       |

### Door Ventilation Options:

- 6" Louvers, (6) @ Top And (6) @ Bottom
- 5/8" x 1-1/8" High Rectangular Perforations
- 5/8" x 1/4" High Mini Louvers
- Solid

### Locker Accessory Options:

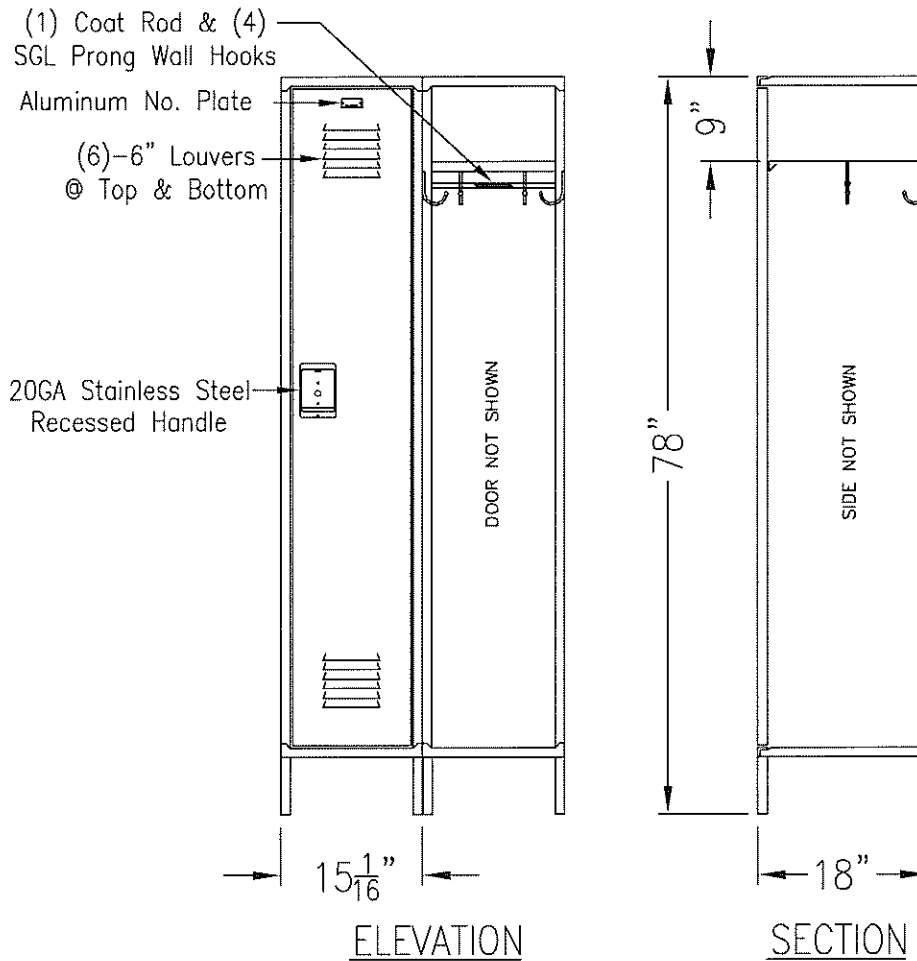
- 24 Gauge Individual Slope Tops
- 4" Zee Base
- 18 Gauge Continuous Slope Hoods
- Base By Other
- 6" Legs

TYPICAL FOR 24" WIDE  
 TYPICAL FOR 18", 21" & 24" DEEP  
 PLEASE ALLOW 1/16" GROWTH PER FRAME

This Drawing Shows A Standard WEC Product. All Drawings Are Copyright Protected By WEC Manufacturing. 07/13/11

**WEC**  
 MANUFACTURING  
 Phone: 901-367-3922  
 Fax: 901-367-3923  
 Email: sales@itswec.com  
 www.itswec.com

# Durable Single Tier Locker 78" High



TYPICAL FOR 15" & 18" WIDE  
TYPICAL FOR 18", 21 & 24" DEEP  
PLEASE ALLOW <sup>1</sup>/<sub>16</sub>" GROWTH PER FRAME

## Standard Construction—Basis Of Design:

(If A Change In Gauge Thickness Is Required Pricing Is Available Upon Request)

Top : 24 Gauge	Door : 16 Gauge
Back : 24 Gauge	Door Frame : 16 Gauge
Side : 24 Gauge	Shelf : 24 Gauge
Bottom : 16 Gauge	

## Door Ventilation Options:

- 6" Louvers, (6) @ Top And (6) @ Bottom
- 5/8" x 1-1/8" High Rectangular Perforations
- 5/8" x 1/4" High Mini Louvers
- Solid

## Locker Accessory Options:

- 24 Gauge Individual Slope Tops
- 18 Gauge Continuous Slope Hoods
- 6" Legs
- 4" Zee Base
- Base By Other

This Drawing Shows A Standard WEC Product. All Drawings  
Are Copyright Protected By WEC Manufacturing. 07/13/11



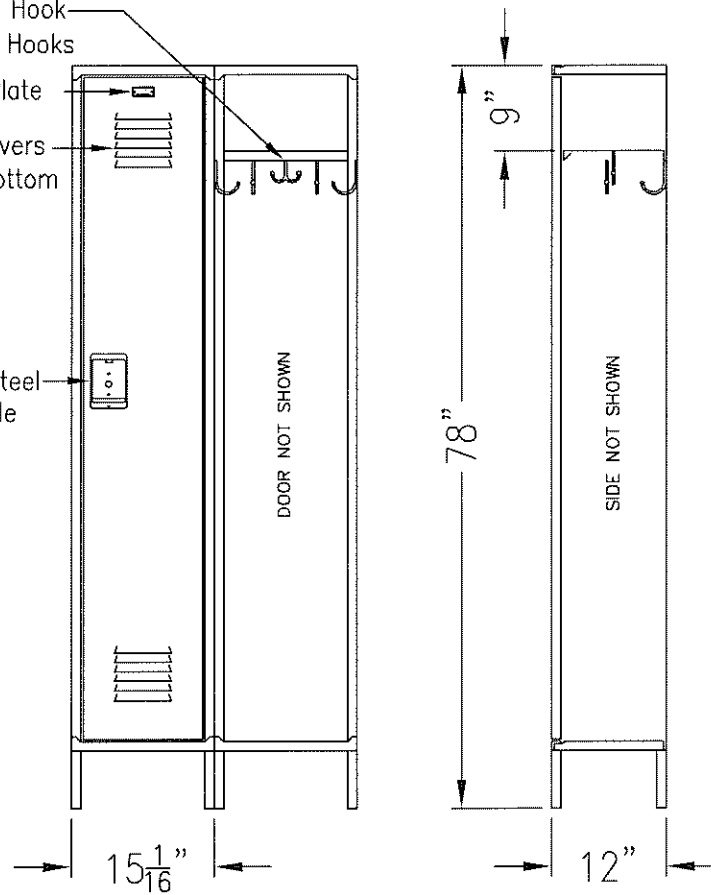
# Durable Single Tier Locker 78" High

(1)DBL Prong Ceiling Hook  
& (4)SGL Prong Wall Hooks

Aluminum No. Plate

(6)-6" Louvers  
@ Top & Bottom

20GA Stainless Steel  
Recessed Handle



ELEVATION

SECTION

TYPICAL FOR 15" & 18" WIDE  
TYPICAL FOR 12" & 15" DEEP  
PLEASE ALLOW 1/16" GROWTH PER FRAME

## Standard Construction—Basis Of Design:

(If A Change In Gauge Thickness Is Required Pricing Is Available Upon Request)

Top : 24 Gauge	Door : 16 Gauge
Back : 24 Gauge	Door Frame : 16 Gauge
Side : 24 Gauge	Shelf : 24 Gauge
Bottom : 16 Gauge	

## Door Ventilation Options:

- 6" Louvers, (6) @ Top And (6) @ Bottom
- 5/8" x 1-1/8" High Rectangular Perforations
- 5/8" x 1/4" High Mini Louvers
- Solid

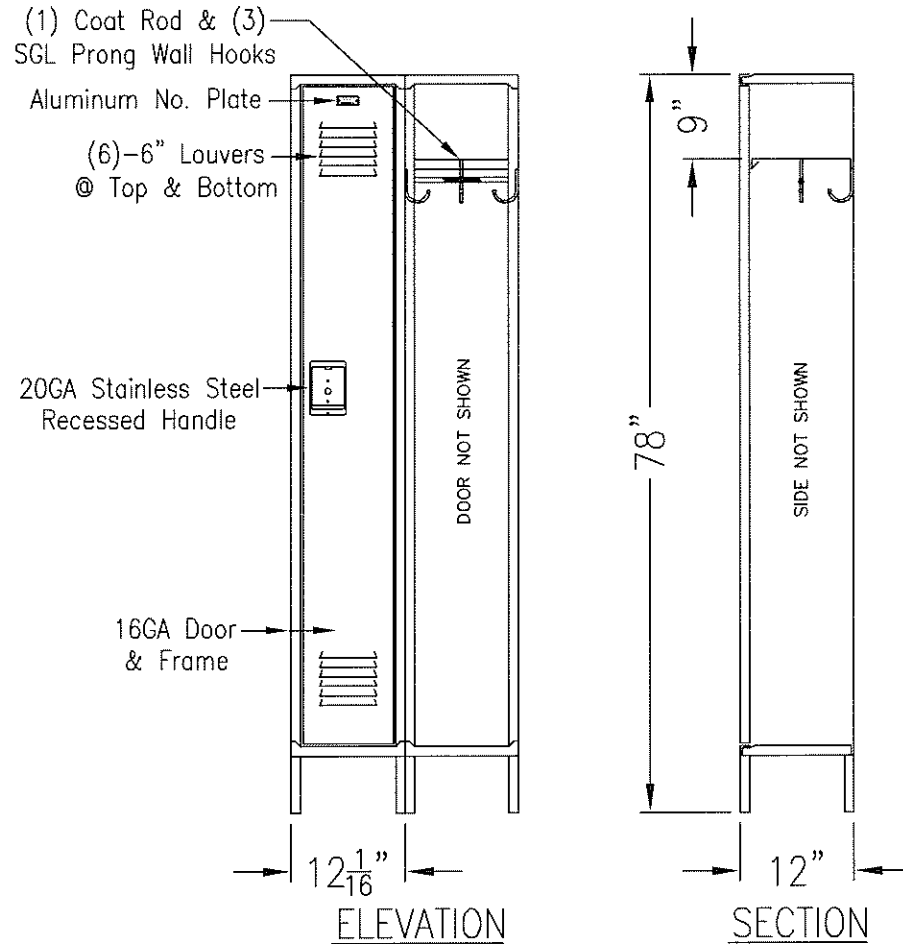
## Locker Accessory Options:

- 24 Gauge Individual Slope Tops
- 4" Zee Base
- 18 Gauge Continuous Slope Hoods
- Base By Other
- 6" Legs

This Drawing Shows A Standard WEC Product. All Drawings  
Are Copyright Protected By WEC Manufacturing. 07/13/11



# Durable Single Tier Locker 78" High



### Standard Construction—Basis Of Design:

(If A Change In Gauge Thickness Is Required Pricing Is Available Upon Request)

- |                   |                       |
|-------------------|-----------------------|
| Top : 24 Gauge    | Door : 16 Gauge       |
| Back : 24 Gauge   | Door Frame : 16 Gauge |
| Side : 24 Gauge   | Shelf : 24 Gauge      |
| Bottom : 16 Gauge |                       |

### Door Ventilation Options:

- 6" Louvers, (6) @ Top And (6) @ Bottom
- 5/8" x 1-1/8" High Rectangular Perforations
- 5/8" x 1/4" High Mini Louvers
- Solid

### Locker Accessory Options:

- 24 Gauge Individual Slope Tops
- 4" Zee Base
- 18 Gauge Continuous Slope Hoods
- Base By Other
- 6" Legs

TYPICAL FOR 9" & 12" WIDE  
 TYPICAL FOR 18", 21" & 24" DEEP  
 PLEASE ALLOW 1/16" GROWTH PER FRAME

This Drawing Shows A Standard WEC Product. All Drawings Are Copyright Protected By WEC Manufacturing. 07/13/11





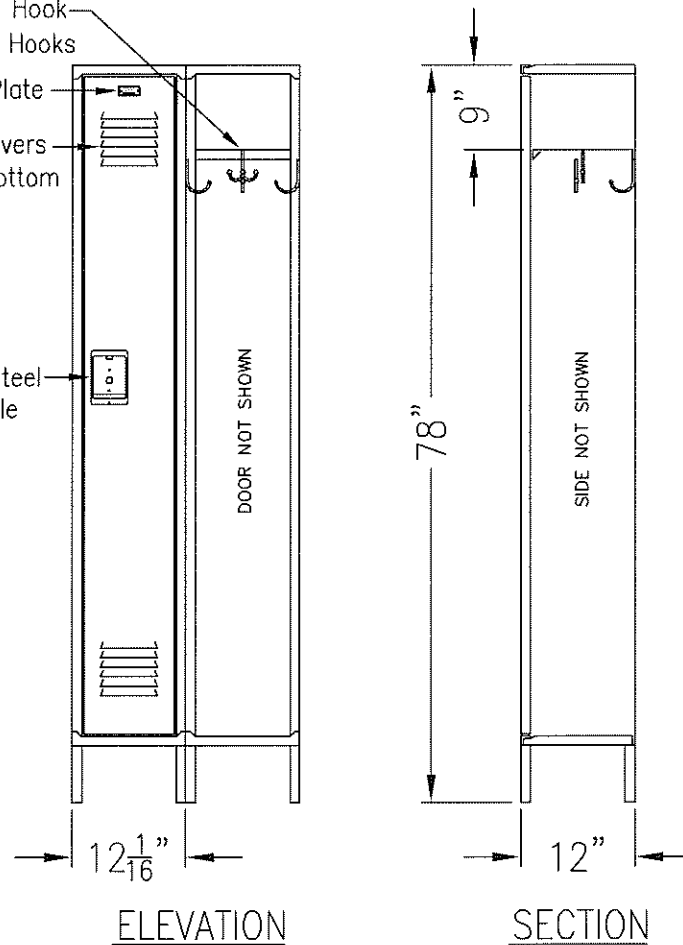
# Durable Single Tier Locker 78" High

(1)DBL Prong Ceiling Hook  
& (3)SGL Prong Wall Hooks

Aluminum No. Plate

(6)-6" Louvers  
@ Top & Bottom

20GA Stainless Steel  
Recessed Handle



## Standard Construction—Basis Of Design:

(If A Change In Gauge Thickness Is Required Pricing Is Available Upon Request)

Top : 24 Gauge	Door : 16 Gauge
Back : 24 Gauge	Door Frame : 16 Gauge
Side : 24 Gauge	Shelf : 24 Gauge
Bottom : 16 Gauge	

## Door Ventilation Options:

- 6" Louvers, (6) @ Top And (6) @ Bottom
- 5/8" x 1-1/8" High Rectangular Perforations
- 5/8" x 1/4" High Mini Louvers
- Solid

## Locker Accessory Options:

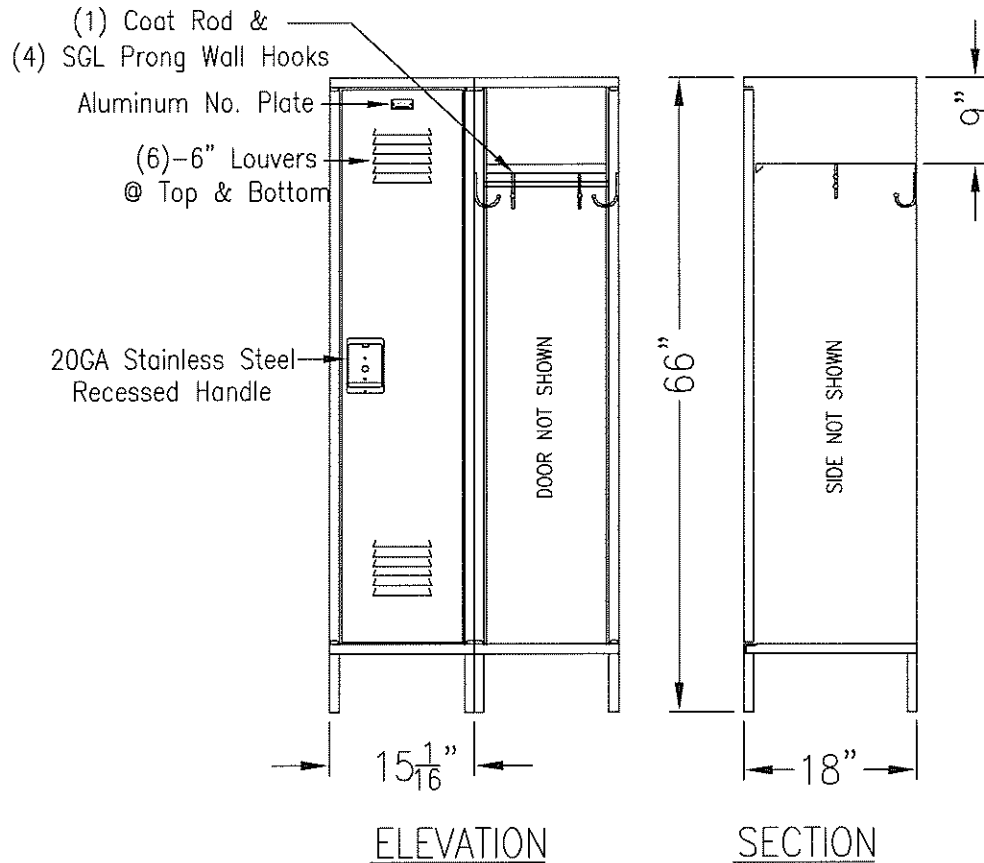
- 24 Gauge Individual Slope Tops
- 4" Zee Base
- 18 Gauge Continuous Slope Hoods
- Base By Other
- 6" Legs

TYPICAL FOR 9" & 12" WIDE  
TYPICAL FOR 12" & 15" DEEP  
PLEASE ALLOW <sup>1</sup>/<sub>16</sub>" GROWTH PER FRAME

This Drawing Shows A Standard WEC Product. All Drawings  
Are Copyright Protected By WEC Manufacturing. 07/13/11



# Durable Single Tier Locker 66" High



## Standard Construction—Basis Of Design:

(If A Change In Gauge Thickness Is Required Pricing Is Available Upon Request)

Top : 24 Gauge	Door : 16 Gauge
Back : 24 Gauge	Door Frame : 16 Gauge
Side : 24 Gauge	Shelf : 24 Gauge
Bottom : 16 Gauge	

## Door Ventilation Options:

- 6" Louvers, (6) @ Top And (6) @ Bottom
- 5/8" x 1-1/8" High Rectangular Perforations
- 5/8" x 1/4" High Mini Louvers
- Solid

## Locker Accessory Options:

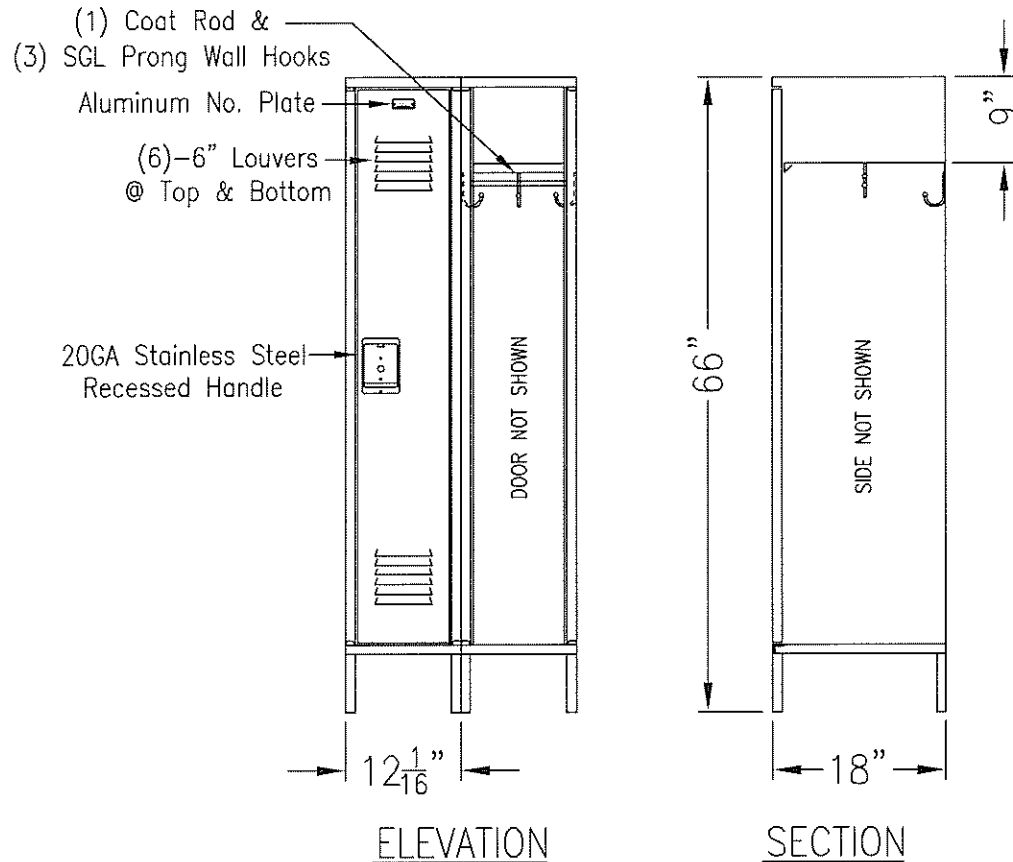
- 24 Gauge Individual Slope Tops
- 4" Zee Base
- 18 Gauge Continuous Slope Hoods
- Base By Other
- 6" Legs

TYPICAL FOR 15" & 18" WIDE  
TYPICAL FOR 18", 21" & 24" DEEP  
PLEASE ALLOW <sup>1</sup>/<sub>16</sub>" GROWTH PER FRAME

This Drawing Shows A Standard WEC Product. All Drawings  
Are Copyright Protected By WEC Manufacturing. 07/13/11



# Durable Single Tier Locker 66" High



## Standard Construction—Basis Of Design:

(If A Change In Gauge Thickness Is Required Pricing Is Available Upon Request)

Top : 24 Gauge	Door : 16 Gauge
Back : 24 Gauge	Door Frame : 16 Gauge
Side : 24 Gauge	Shelf : 24 Gauge
Bottom : 16 Gauge	

## Door Ventilation Options:

- 6" Louvers, (6) @ Top And (6) @ Bottom
- 5/8" x 1-1/8" High Rectangular Perforations
- 5/8" x 1/4" High Mini Louvers
- Solid

## Locker Accessory Options:

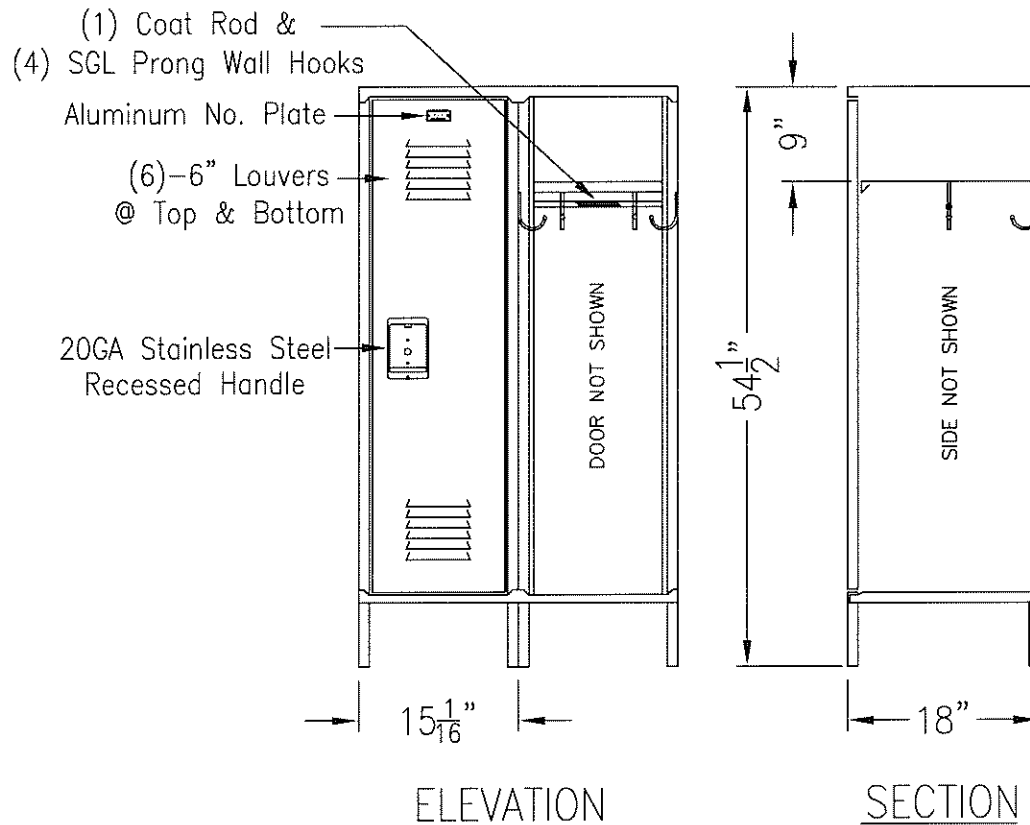
- 24 Gauge Individual Slope Tops
- 4" Zee Base
- 18 Gauge Continuous Slope Hoods
- Base By Other
- 6" Legs

TYPICAL FOR 9" & 12" WIDE  
TYPICAL FOR 18", 21" & 24" DEEP  
PLEASE ALLOW <sup>1</sup>/<sub>16</sub>" GROWTH PER FRAME

This Drawing Shows A Standard WEC Product. All Drawings  
Are Copyright Protected By WEC Manufacturing. 07/13/11



# Durable Single Tier Locker 54-1/2" High



TYPICAL FOR 15" & 18" WIDE  
TYPICAL FOR 18", 21" & 24" DEEP  
PLEASE ALLOW <sup>1</sup>/<sub>16</sub>" GROWTH PER FRAME

## Standard Construction—Basis Of Design:

(If A Change In Gauge Thickness Is Required Pricing Is Available Upon Request)

Top : 24 Gauge	Door : 16 Gauge
Back : 24 Gauge	Door Frame : 16 Gauge
Side : 24 Gauge	Shelf : 24 Gauge
Bottom : 16 Gauge	

## Door Ventilation Options:

- 6" Louvers, (6) @ Top And (6) @ Bottom
- 5/8" x 1-1/8" High Rectangular Perforations
- 5/8" x 1/4" High Mini Louvers
- Solid

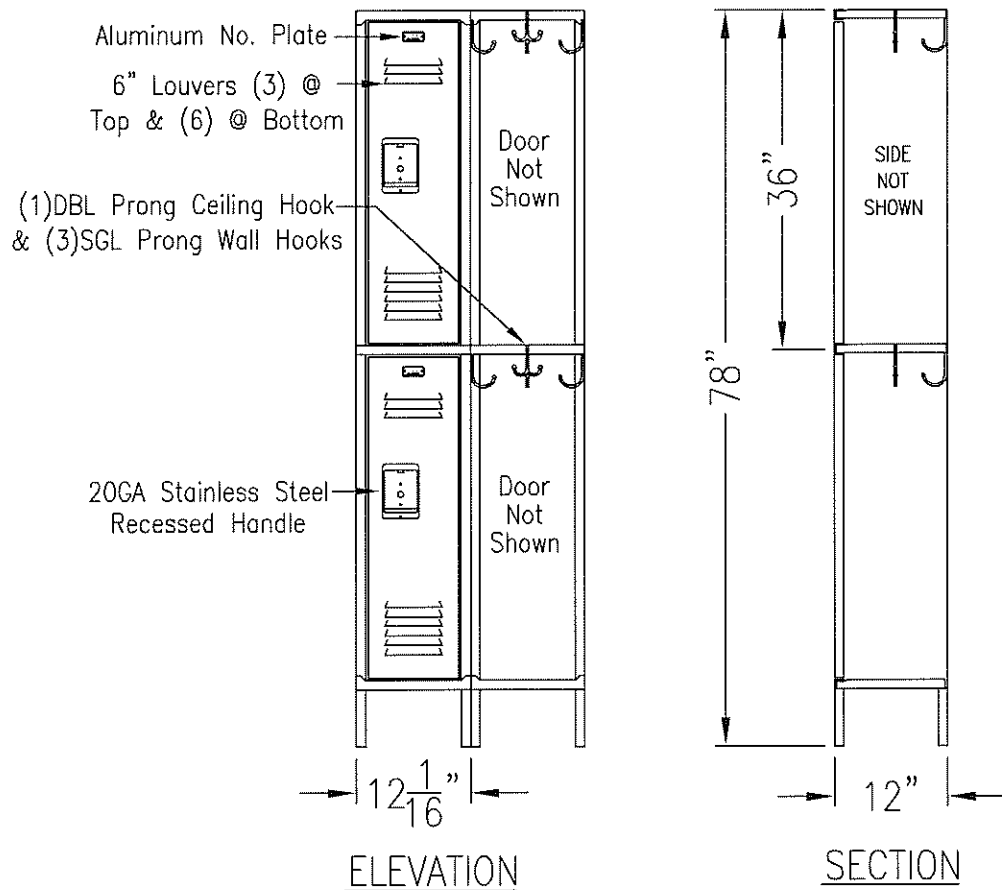
## Locker Accessory Options:

- 24 Gauge Individual Slope Tops
- 18 Gauge Continuous Slope Hoods
- 6" Legs
- 4" Zee Base
- Base By Other

This Drawing Shows A Standard WEC Product. All Drawings  
Are Copyright Protected By WEC Manufacturing. 07/13/11



# Durable Double Tier Locker 78" High



TYPICAL FOR 9" & 12" WIDE  
TYPICAL FOR 12", 15", 18" & 21" DEEP  
PLEASE ALLOW  $\frac{1}{16}$ " GROWTH PER FRAME

### Standard Construction—Basis Of Design:

(If A Change In Gauge Thickness Is Required Pricing Is Available Upon Request)

Top : 24 Gauge	Door : 16 Gauge
Back : 24 Gauge	Door Frame : 16 Gauge
Side : 24 Gauge	Shelf : 24 Gauge
Bottom : 16 Gauge	

### Door Ventilation Options:

- 6" Louvers, (3) @ Top And (6) @ Bottom
- 5/8" x 1-1/8" High Rectangular Perforations
- 5/8" x 1/4" High Mini Louvers
- Solid

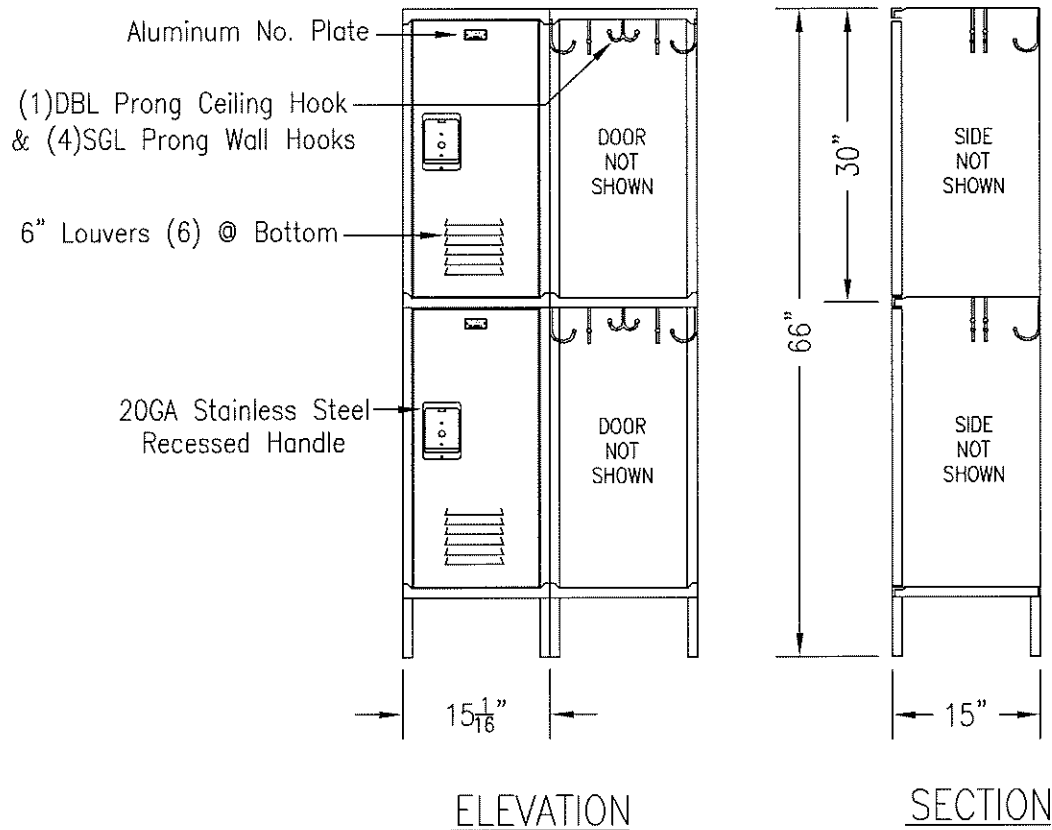
### Locker Accessory Options:

- |  |  |
|--|--|
| <input type="checkbox"/> 24 Gauge Individual Slope Tops  | <input type="checkbox"/> 4" Zee Base   |
| <input type="checkbox"/> 18 Gauge Continuous Slope Hoods | <input type="checkbox"/> Base By Other |
| <input type="checkbox"/> 6" Legs                         |  |

This Drawing Shows A Standard WEC Product. All Drawings Are Copyright Protected By WEC Manufacturing. 07/13/11



# Durable Double Tier Locker 66" High



## Standard Construction—Basis Of Design:

(If A Change In Gauge Thickness Is Required Pricing Is Available Upon Request)

Top : 24 Gauge	Door : 16 Gauge
Back : 24 Gauge	Door Frame : 16 Gauge
Side : 24 Gauge	Shelf : 24 Gauge
Bottom : 16 Gauge	

## Door Ventilation Options:

- 6" Louvers, (0) @ Top And (6) @ Bottom
- 5/8" x 1-1/8" High Rectangular Perforations
- 5/8" x 1/4" High Mini Louvers
- Solid

## Locker Accessory Options:

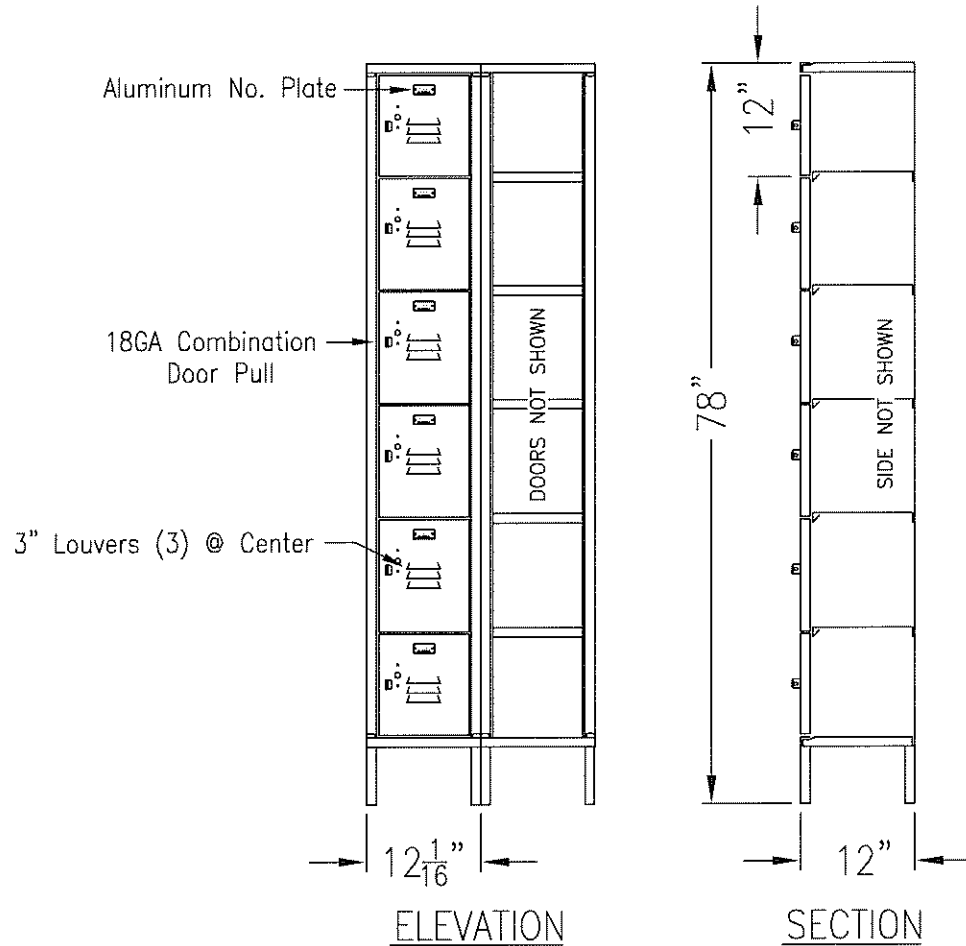
- 24 Gauge Individual Slope Tops
- 18 Gauge Continuous Slope Hoods
- 6" Legs
- 4" Zee Base
- Base By Other

TYPICAL FOR 15" & 18" WIDE  
TYPICAL FOR 12", 15", 18", 21" & 24" DEEP  
PLEASE ALLOW  $\frac{1}{16}$ " GROWTH PER FRAME

This Drawing Shows A Standard WEC Product. All Drawings  
Are Copyright Protected By WEC Manufacturing. 07/13/11



# Durable 6-Tier Locker 78" High



## Standard Construction-Basis Of Design:

(If A Change In Gauge Thickness Is Required Pricing Is Available Upon Request)

Top : 24 Gauge	Door : 16 Gauge
Back : 24 Gauge	Door Frame : 16 Gauge
Side : 24 Gauge	Shelf : 24 Gauge
Bottom : 16 Gauge	

## Door Ventilation Options:

- 3" Louvers, (3) @ Center
- 5/8" x 1-1/8" High Rectangular Perforations
- 5/8" x 1/4" High Mini Louvers
- Solid

## Locker Accessory Options:

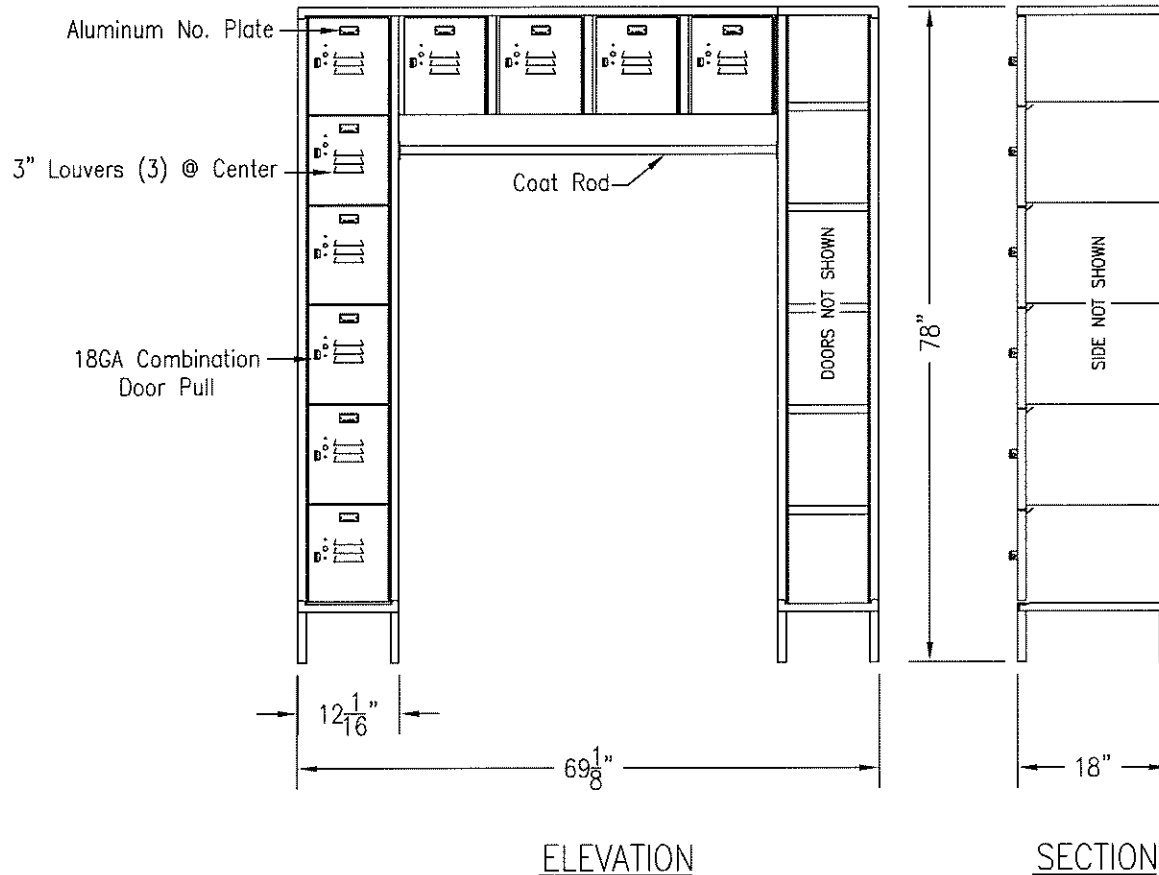
- 24 Gauge Individual Slope Tops
- 4" Zee Base
- 18 Gauge Continuous Slope Hoods
- Base By Other
- 6" Legs

TYPICAL FOR 12", 15" & 18" WIDE  
TYPICAL FOR 12", 15", 18" & 21" DEEP  
PLEASE ALLOW <sup>1</sup>/<sub>16</sub>" GROWTH PER FRAME

This Drawing Shows A Standard WEC Product. All Drawings  
Are Copyright Protected By WEC Manufacturing. 07/13/11



## Durable 16-Person Locker 78" High



### Standard Construction—Basis Of Design: (If A Change In Gauge Thickness Is Required Pricing Is Available Upon Request)

Top : 24 Gauge	Door : 16 Gauge
Back : 24 Gauge	Door Frame : 16 Gauge
Side : 24 Gauge	Shelf : 24 Gauge
Bottom : 16 Gauge	

### Door Ventilation Options:

- 3" Louvers, (3) @ Center
- 5/8" x 1-1/8" High Rectangular Perforations
- 5/8" x 1/4" High Mini Louvers
- Solid

### Locker Accessory Options:

- 24 Gauge Individual Slope Tops
- 4" Zee Base
- 18 Gauge Continuous Slope Hoods
- Base By Other
- 6" Legs

This Drawing Shows A Standard WEC Product. All Drawings  
Are Copyright Protected By WEC Manufacturing. 07/13/11

# WEC

MANUFACTURING

Phone: 901-367-3922

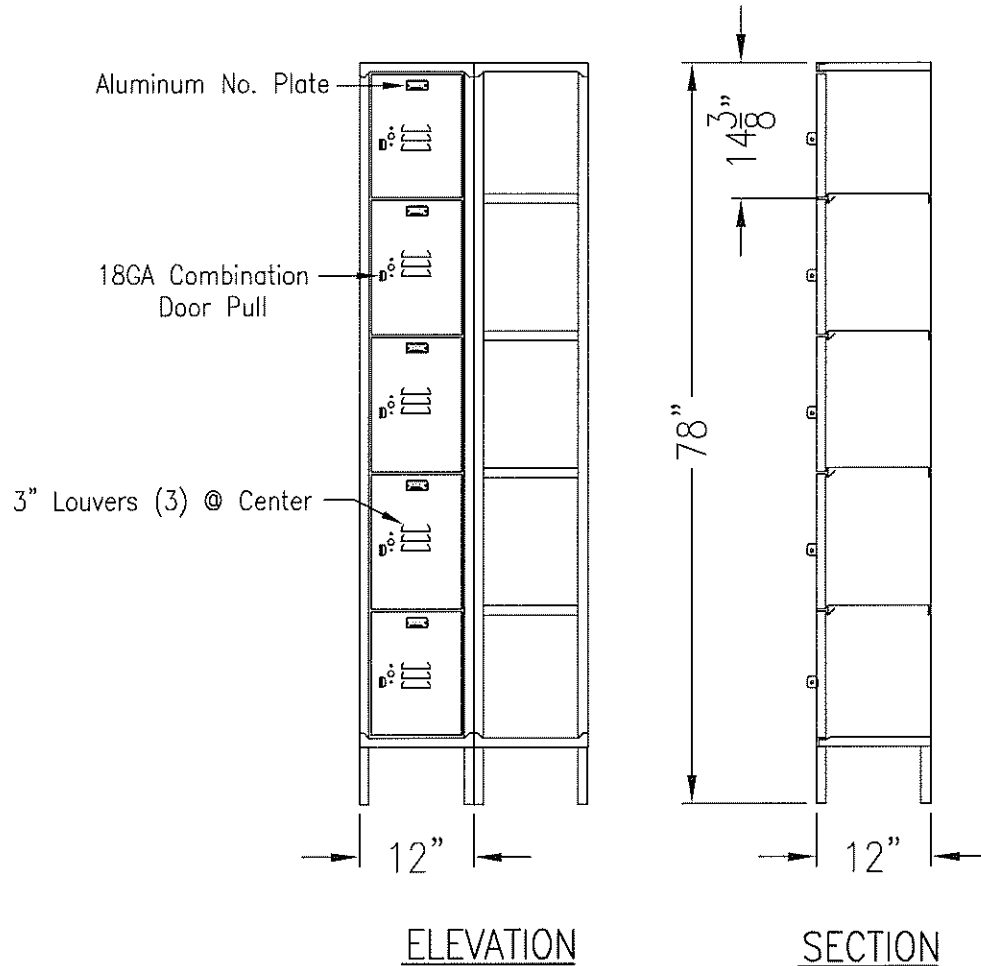
Fax: 901-367-3923

Email: sales@itswec.com

www.itswec.com



# Durable 5-Tier Locker 78" High



## Standard Construction—Basis Of Design:

(If A Change In Gauge Thickness Is Required Pricing Is Available Upon Request)

Top : 24 Gauge	Door : 16 Gauge
Back : 24 Gauge	Door Frame : 16 Gauge
Side : 24 Gauge	Shelf : 24 Gauge
Bottom : 16 Gauge	

## Door Ventilation Options:

- 3" Louvers, (3) @ Center
- 5/8" x 1-1/8" High Rectangular Perforations
- 5/8" x 1/4" High Mini Louvers
- Solid

## Locker Accessory Options:

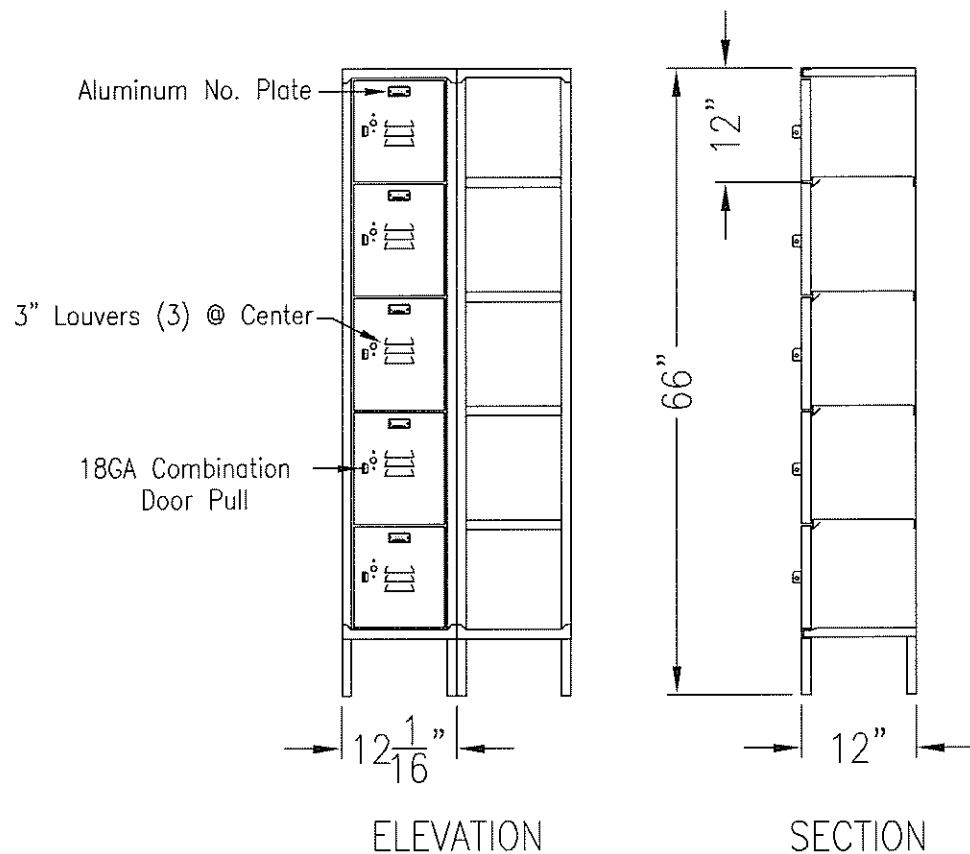
- 24 Gauge Individual Slope Tops
- 18 Gauge Continuous Slope Hoods
- 6" Legs
- 4" Zee Base
- Base By Other

TYPICAL FOR 12" & 15" WIDE  
TYPICAL FOR 12", 15", 18" & 21" DEEP  
PLEASE ALLOW 1/16" GROWTH PER FRAME

This Drawing Shows A Standard WEC Product. All Drawings  
Are Copyright Protected By WEC Manufacturing. 07/13/11



## Durable 5-Tier Locker 66" High



### Standard Construction—Basis Of Design:

(If A Change In Gauge Thickness Is Required Pricing Is Available Upon Request)

Top : 24 Gauge	Door : 16 Gauge
Back : 24 Gauge	Door Frame : 16 Gauge
Side : 24 Gauge	Shelf : 24 Gauge
Bottom : 16 Gauge	

### Door Ventilation Options:

- 3" Louvers, (3) @ Center
- 5/8" x 1-1/8" High Rectangular Perforations
- 5/8" x 1/4" High Mini Louvers
- Solid

### Locker Accessory Options:

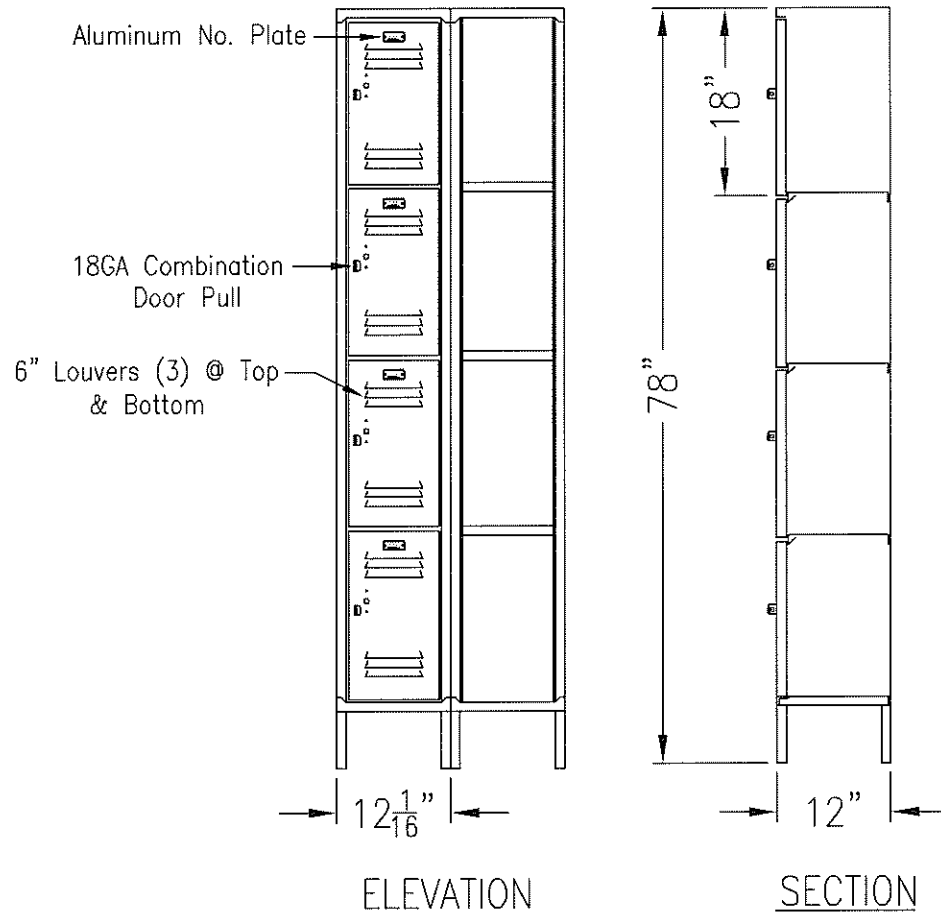
- 24 Gauge Individual Slope Tops
- 18 Gauge Continuous Slope Hoods
- 6" Legs
- 4" Zee Base
- Base By Other

TYPICAL FOR 12" & 15" WIDE  
TYPICAL FOR 12", 15", 18" & 21" DEEP  
PLEASE ALLOW  $\frac{1}{16}$ " GROWTH PER FRAME

This Drawing Shows A Standard WEC Product. All Drawings Are Copyright Protected By WEC Manufacturing. 07/13/11



# Durable 4-Tier Locker 78" High



## Standard Construction—Basis Of Design:

(If A Change In Gauge Thickness Is Required Pricing Is Available Upon Request)

Top : 24 Gauge	Door : 16 Gauge
Back : 24 Gauge	Door Frame : 16 Gauge
Side : 24 Gauge	Shelf : 24 Gauge
Bottom : 16 Gauge	

## Door Ventilation Options:

- 6" Louvers, (3) @ Top And (3) @ Bottom
- 5/8" x 1-1/8" High Rectangular Perforations
- 5/8" x 1/4" High Mini Louvers
- Solid

## Locker Accessory Options:

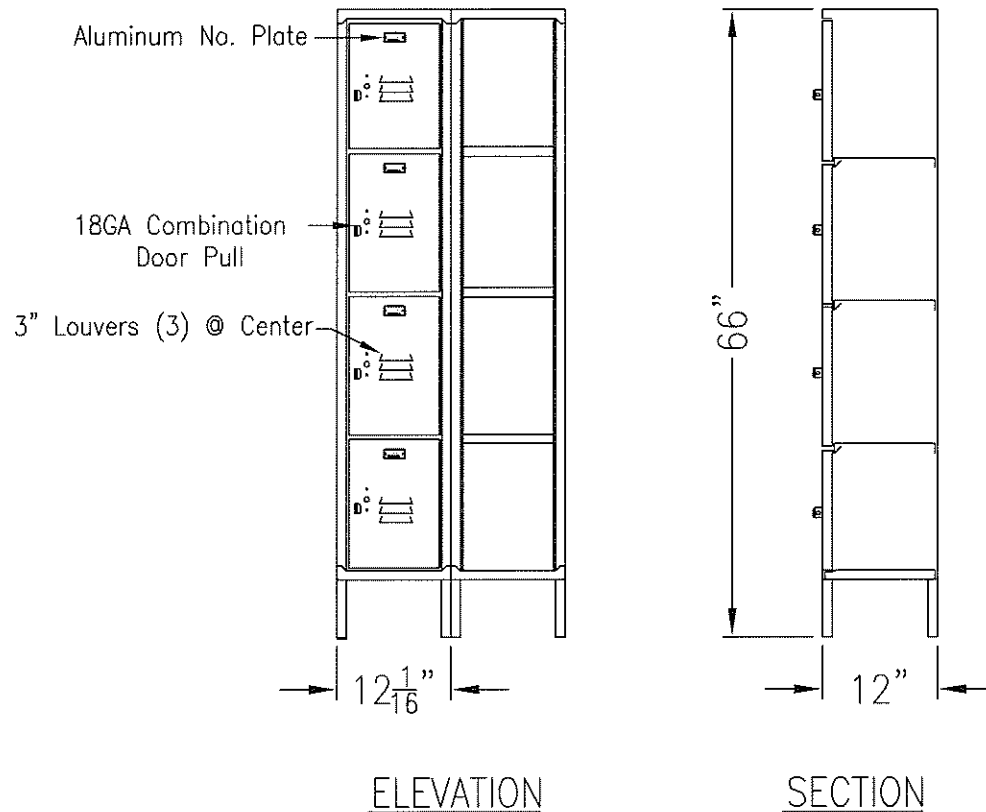
- 24 Gauge Individual Slope Tops
- 4" Zee Base
- 18 Gauge Continuous Slope Hoods
- Base By Other
- 6" Legs

TYPICAL FOR 12" & 15" WIDE  
TYPICAL FOR 12", 15", 18" & 21" DEEP  
PLEASE ALLOW 1/16" GROWTH PER FRAME

This Drawing Shows A Standard WEC Product. All Drawings  
Are Copyright Protected By WEC Manufacturing. 07/13/11



## Durable 4-Tier Locker 66" High



TYPICAL FOR 12" & 15" WIDE  
TYPICAL FOR 12", 15", 18" & 21" DEEP  
PLEASE ALLOW  $\frac{1}{16}$ " GROWTH PER FRAME

### Standard Construction—Basis Of Design:

(If A Change In Gauge Thickness Is Required Pricing Is Available Upon Request)

Top : 24 Gauge	Door : 16 Gauge
Back : 24 Gauge	Door Frame : 16 Gauge
Side : 24 Gauge	Shelf : 24 Gauge
Bottom : 16 Gauge	

### Door Ventilation Options:

- 3" Louvers, (3) @ Center
- 5/8" x 1-1/8" High Rectangular Perforations
- 5/8" x 1/4" High Mini Louvers
- Solid

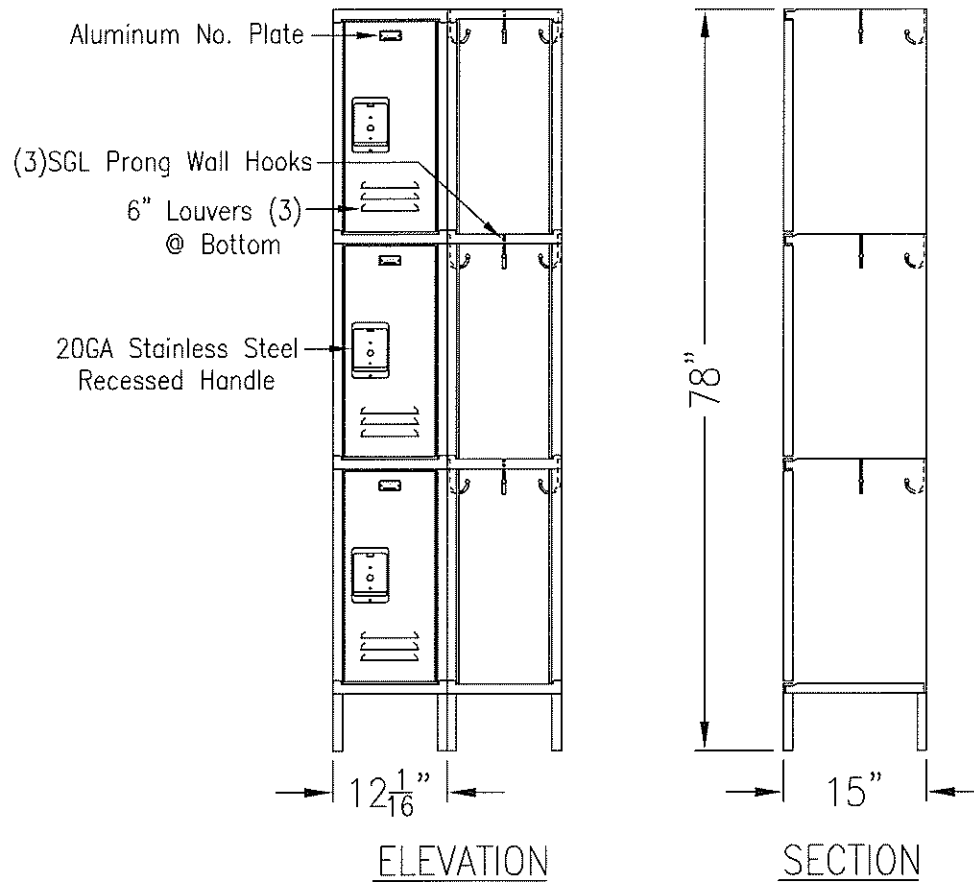
### Locker Accessory Options:

- 24 Gauge Individual Slope Tops
- 18 Gauge Continuous Slope Hoods
- 6" Legs
- 4" Zee Base
- Base By Other

This Drawing Shows A Standard WEC Product. All Drawings Are Copyright Protected By WEC Manufacturing. 07/13/11



# Durable 3-Tier Locker 78" High



TYPICAL FOR 9" & 12" WIDE  
TYPICAL FOR 12", 15", 18" & 21" DEEP  
PLEASE ALLOW <sup>1</sup>/<sub>16</sub>" GROWTH PER FRAME

### Standard Construction—Basis Of Design:

(If A Change In Gauge Thickness Is Required Pricing Is Available Upon Request)

Top : 24 Gauge	Door : 16 Gauge
Back : 24 Gauge	Door Frame : 16 Gauge
Side : 24 Gauge	Shelf : 24 Gauge
Bottom : 16 Gauge	

### Door Ventilation Options:

- 6" Louvers, (0) @ Top And (3) @ Bottom
- 5/8" x 1-1/8" High Rectangular Perforations
- 5/8" x 1/4" High Mini Louvers
- Solid

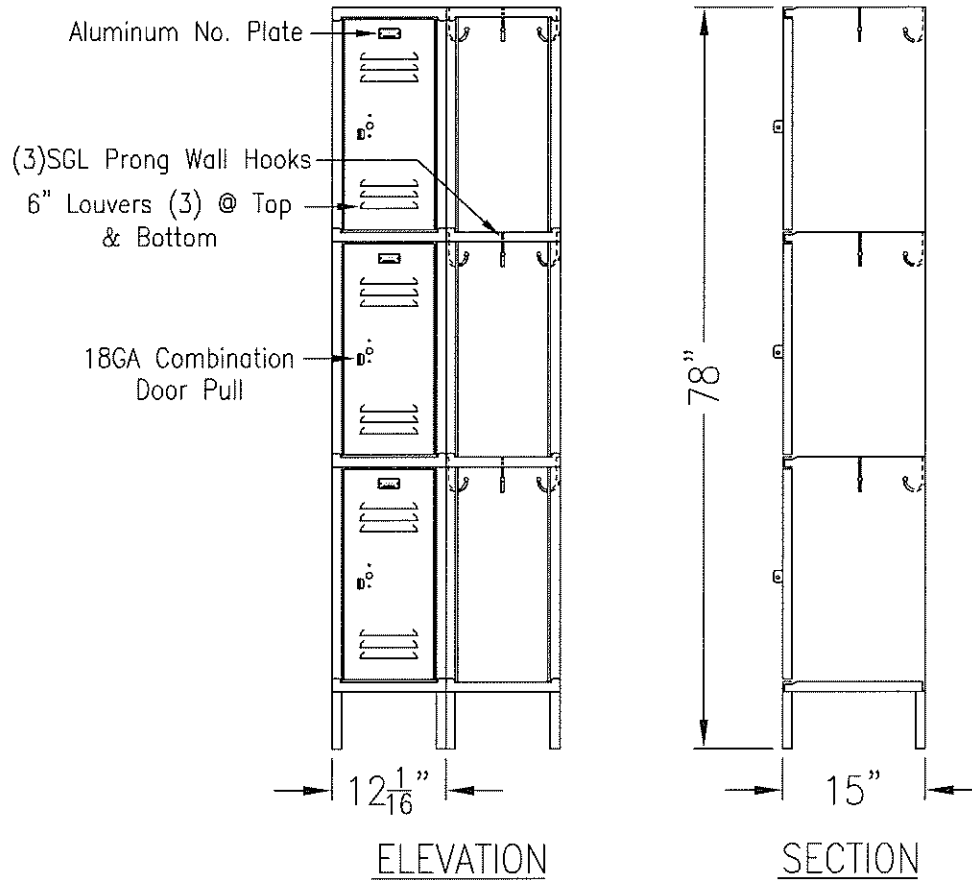
### Locker Accessory Options:

- 24 Gauge Individual Slope Tops
- 4" Zee Base
- 18 Gauge Continuous Slope Hoods
- Base By Other
- 6" Legs

This Drawing Shows A Standard WEC Product. All Drawings  
Are Copyright Protected By WEC Manufacturing. 07/13/11



# Durable 3-Tier Locker 78" High



TYPICAL FOR 9" & 12" WIDE  
TYPICAL FOR 12", 15", 18" & 21" DEEP  
PLEASE ALLOW  $\frac{1}{16}$ " GROWTH PER FRAME

### Standard Construction—Basis Of Design:

(If A Change In Gauge Thickness Is Required Pricing Is Available Upon Request)

- |                   |                       |
|-------------------|-----------------------|
| Top : 24 Gauge    | Door : 16 Gauge       |
| Back : 24 Gauge   | Door Frame : 16 Gauge |
| Side : 24 Gauge   | Shelf : 24 Gauge      |
| Bottom : 16 Gauge |                       |

### Door Ventilation Options:

- 6" Louvers, (3) @ Top And (3) @ Bottom
- 5/8" x 1-1/8" High Rectangular Perforations
- 5/8" x 1/4" High Mini Louvers
- Solid

### Locker Accessory Options:

- |  |  |
|--|--|
| <input type="checkbox"/> 24 Gauge Individual Slope Tops  | <input type="checkbox"/> 4" Zee Base   |
| <input type="checkbox"/> 18 Gauge Continuous Slope Hoods | <input type="checkbox"/> Base By Other |
| <input type="checkbox"/> 6" Legs                         |  |

This Drawing Shows A Standard WEC Product. All Drawings Are Copyright Protected By WEC Manufacturing. 07/13/11

**WEC**

MANUFACTURING

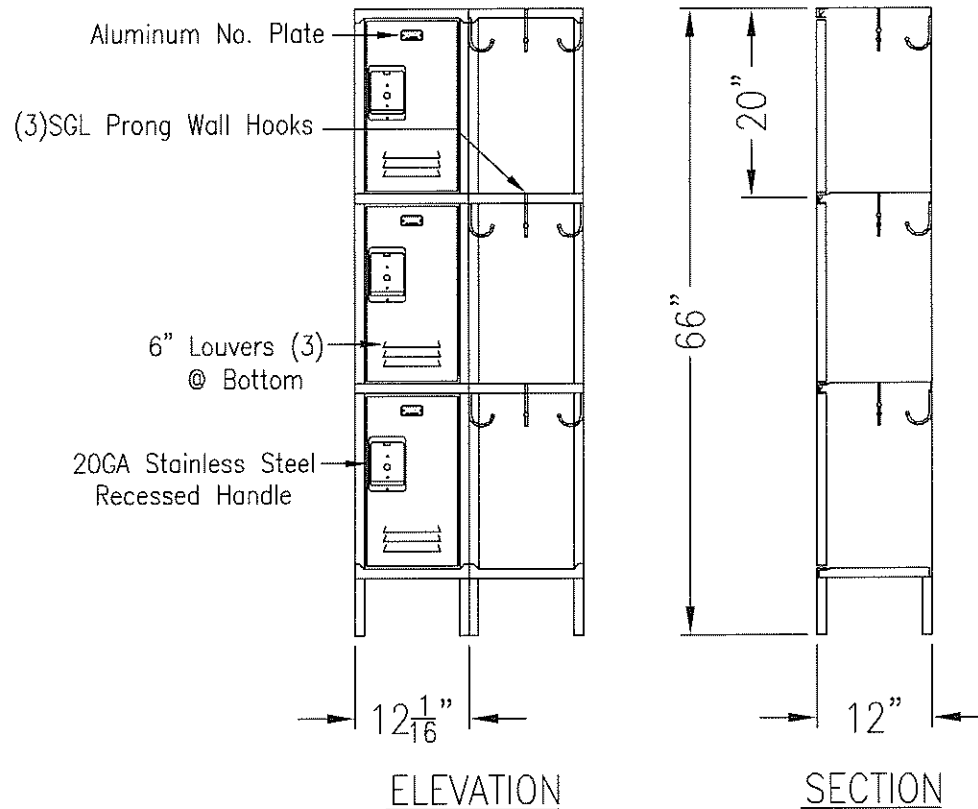
Phone: 901-367-3922

Fax: 901-367-3923

Email: sales@itswec.com

www.itswec.com

# Durable 3-Tier Locker 66" High



TYPICAL FOR 9" & 12" WIDE  
TYPICAL FOR 12", 15", 18" & 21" DEEP  
PLEASE ALLOW  $\frac{1}{16}$ " GROWTH PER FRAME

### Standard Construction—Basis Of Design:

(If A Change In Gauge Thickness Is Required Pricing Is Available Upon Request)

- |                   |                       |
|-------------------|-----------------------|
| Top : 24 Gauge    | Door : 16 Gauge       |
| Back : 24 Gauge   | Door Frame : 16 Gauge |
| Side : 24 Gauge   | Shelf : 24 Gauge      |
| Bottom : 16 Gauge |                       |

### Door Ventilation Options:

- 6" Louvers, (0) @ Top And (3) @ Bottom
- 5/8" x 1-1/8" High Rectangular Perforations
- 5/8" x 1/4" High Mini Louvers
- Solid

### Door Handle Options:

- 20 Gauge Recessed Handle
- 18 Gauge Door Pull

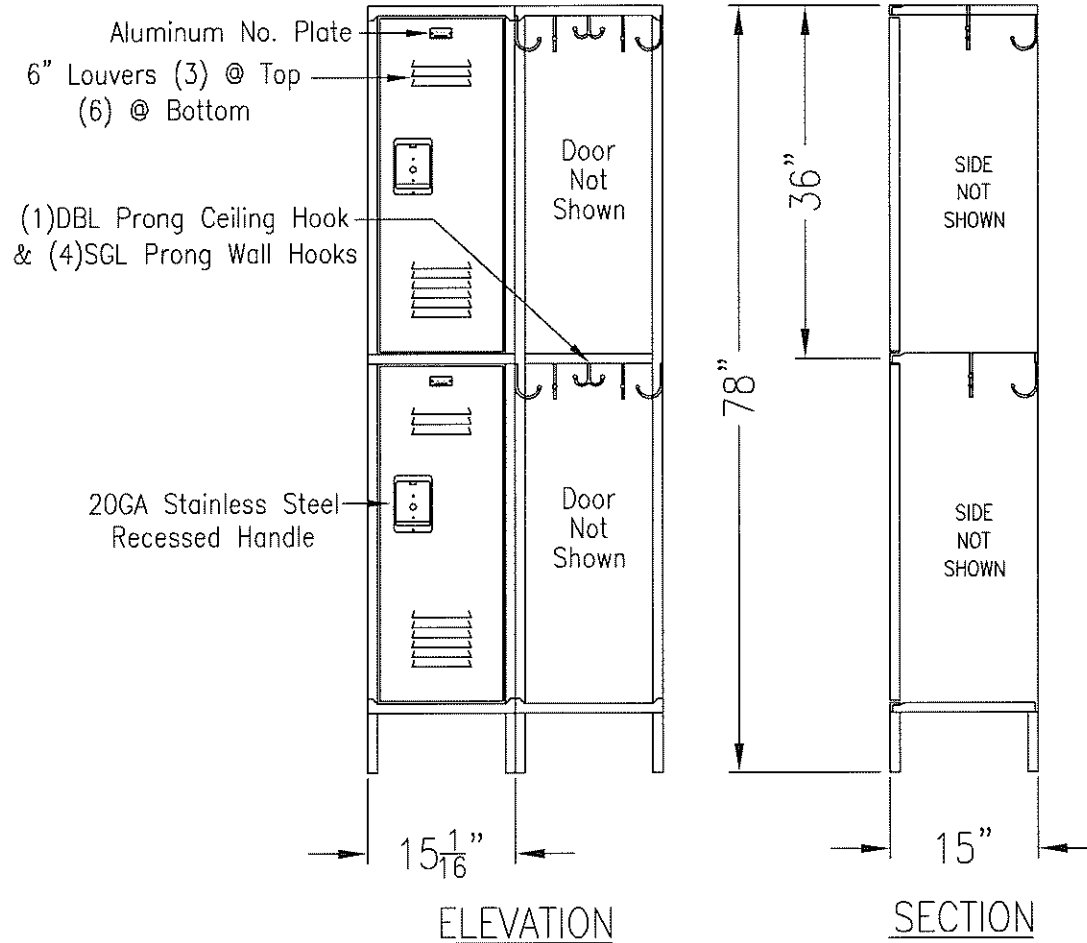
### Locker Accessory Options:

- 24 Gauge Individual Slope Tops
- 4" Zee Base
- 18 Gauge Continuous Slope Hoods
- Base By Other
- 6" Legs

This Drawing Shows A Standard WEC Product. All Drawings Are Copyright Protected By WEC Manufacturing. 07/13/11



# Durable Double Tier Locker 78" High



## Standard Construction—Basis Of Design: (If A Change In Gauge Thickness Is Required Pricing Is Available Upon Request)

Top : 24 Gauge	Door : 16 Gauge
Back : 24 Gauge	Door Frame : 16 Gauge
Side : 24 Gauge	Shelf : 24 Gauge
Bottom : 16 Gauge	

## Door Ventilation Options:

- 6" Louvers, (3) @ Top And (6) @ Bottom
- 5/8" x 1-1/8" High Rectangular Perforations
- 5/8" x 1/4" High Mini Louvers
- Solid

## Locker Accessory Options:

- 24 Gauge Individual Slope Tops
- 18 Gauge Continuous Slope Hoods
- 6" Legs
- 4" Zee Base
- Base By Other

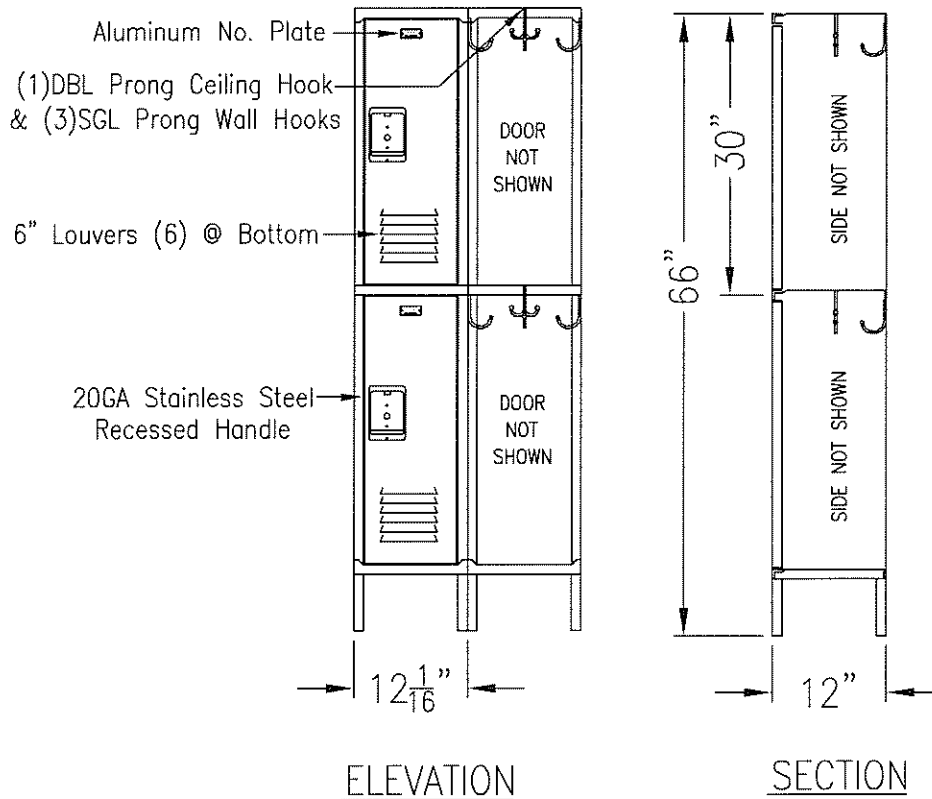
TYPICAL FOR 15" & 18" WIDE  
TYPICAL FOR 12", 15", 18", 21" & 24" DEEP  
PLEASE ALLOW  $\frac{1}{16}$ " GROWTH PER FRAME

This Drawing Shows A Standard WEC Product. All Drawings  
Are Copyright Protected By WEC Manufacturing. 07/13/11





# Durable Double Tier Locker 66" High



TYPICAL FOR 9" & 12" WIDE  
TYPICAL FOR 12", 15", 18" & 21" DEEP  
PLEASE ALLOW 1/16" GROWTH PER FRAME

### Standard Construction—Basis Of Design:

(If A Change In Gauge Thickness Is Required Pricing Is Available Upon Request)

Top : 24 Gauge	Door : 16 Gauge
Back : 24 Gauge	Door Frame : 16 Gauge
Side : 24 Gauge	Shelf : 24 Gauge
Bottom : 16 Gauge	

### Door Ventilation Options:

- 6" Louvers, (0) @ Top And (6) @ Bottom
- 5/8" x 1-1/8" High Rectangular Perforations
- 5/8" x 1/4" High Mini Louvers
- Solid

### Locker Accessory Options:

- 24 Gauge Individual Slope Tops
- 4" Zee Base
- 18 Gauge Continuous Slope Hoods
- Base By Other
- 6" Legs

This Drawing Shows A Standard WEC Product. All Drawings  
Are Copyright Protected By WEC Manufacturing. 07/13/11

