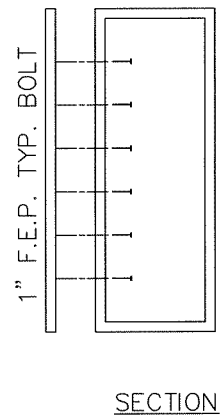
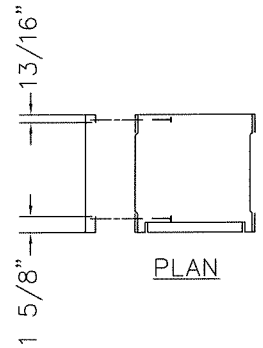
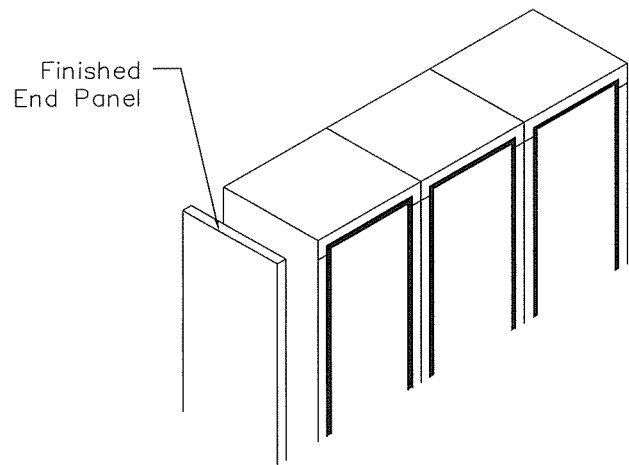
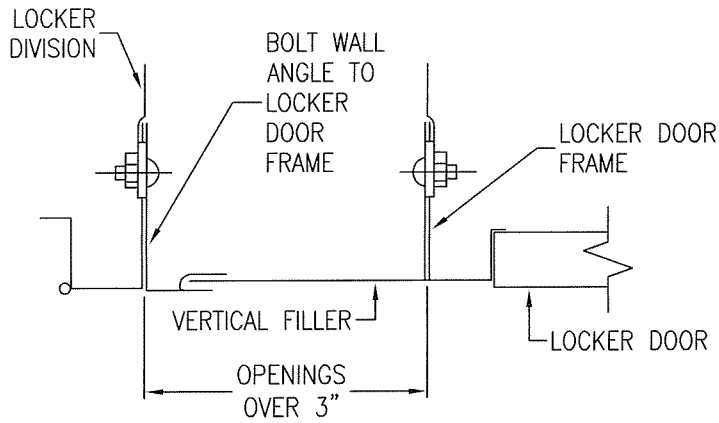


DETAIL: INDIVIDUAL CLOSED BASE

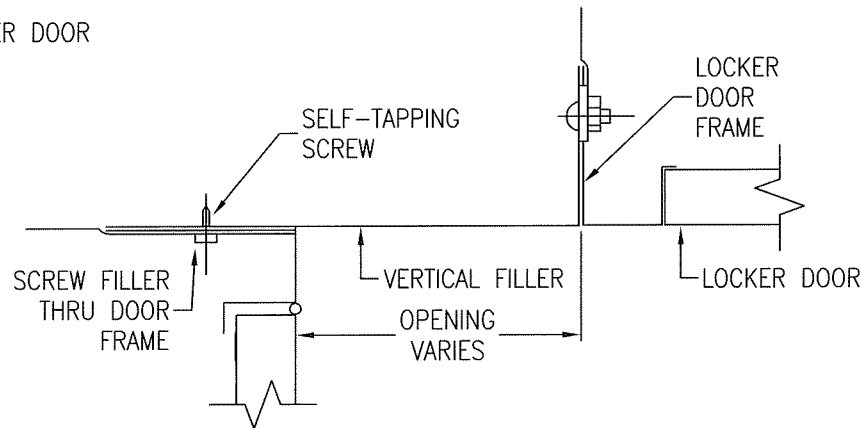


DETAIL: FINISHED END PANEL

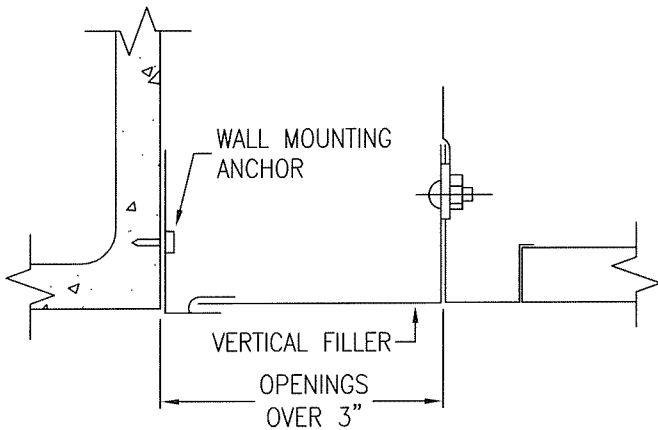
## VERTICAL FILLER / WALL ANGLE DETAIL



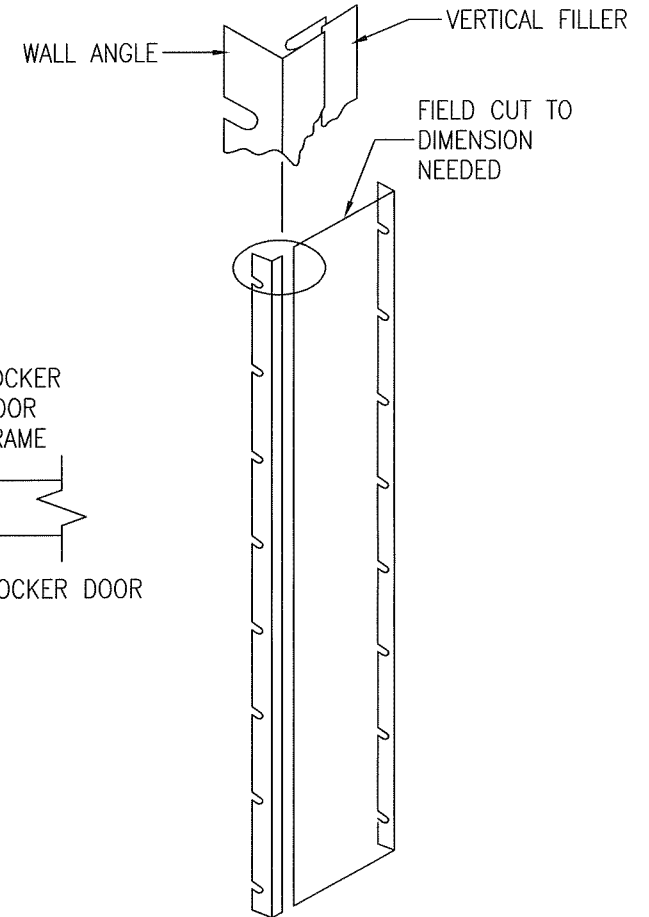
**TYPICAL DETAIL AT VERTICAL FILLER  
LOCKER TO LOCKER APPLICATION**



**TYPICAL DETAIL AT VERTICAL FILLER  
CORNER APPLICATION**

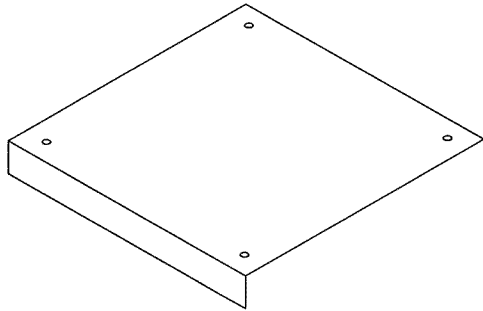


**TYPICAL DETAIL AT VERTICAL FILLER  
LOCKER TO WALL APPLICATION**

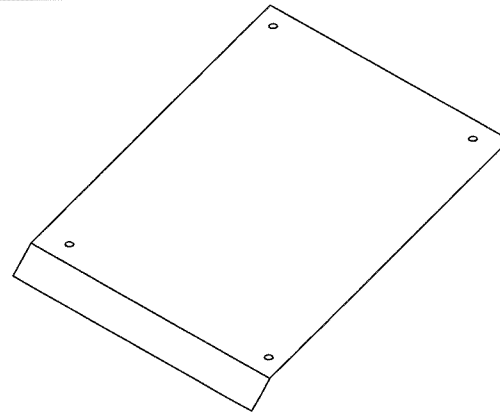


**LEAVE BOLTS LOOSE TO SLIDE  
FILLER AND/OR WALL ANGLE  
BEHIND BOLT HEAD THEN TIGHTEN  
NUT FROM INSIDE LOCKER.**

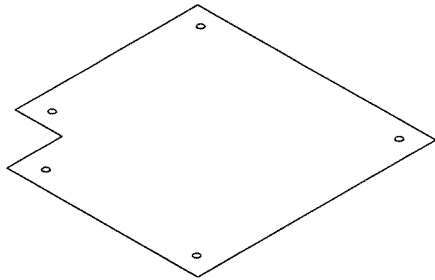
## TOP FILLER DETAILS



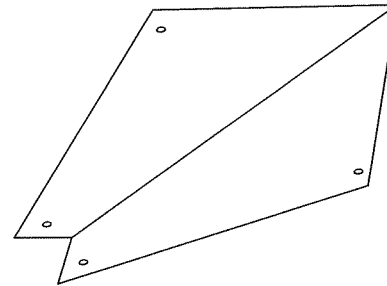
FLAT TOP FILLER



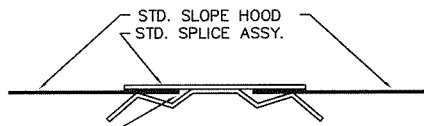
SLOPE TOP FILLER



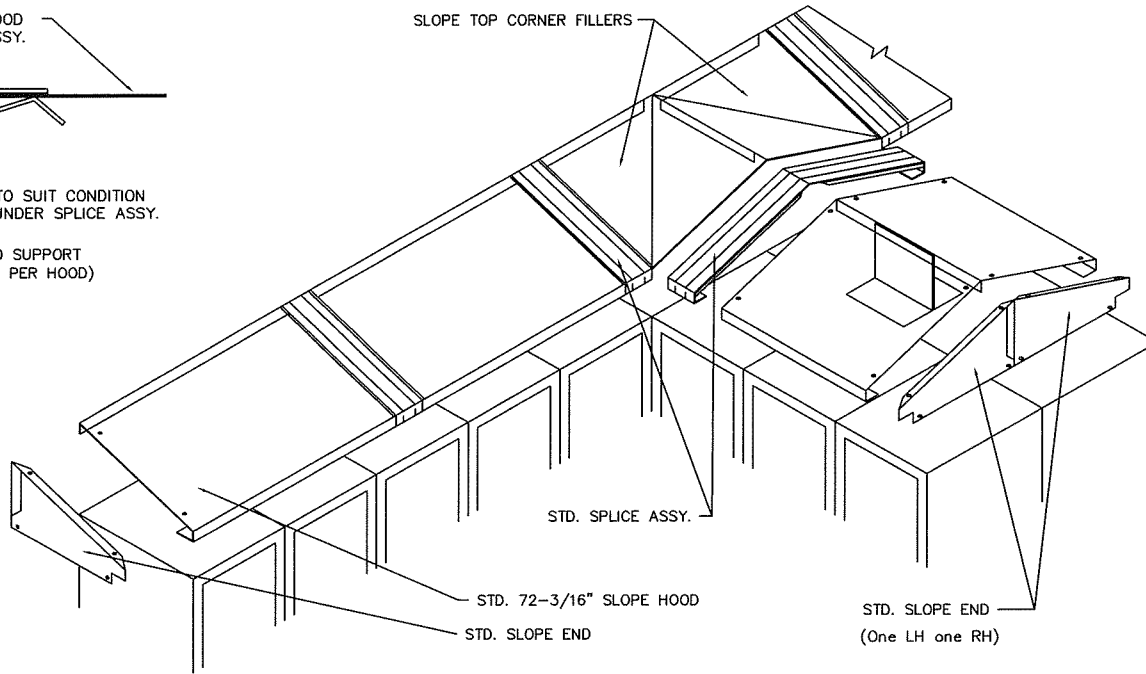
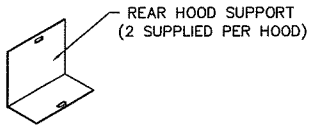
FLAT TOP CORNER FILLER



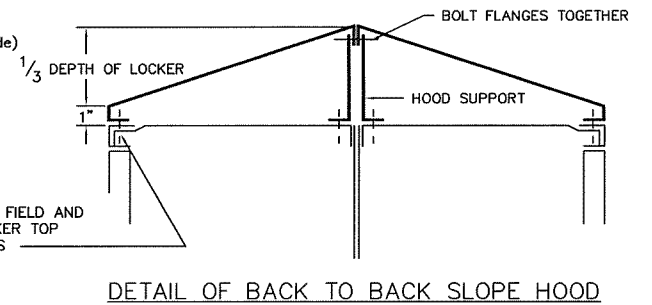
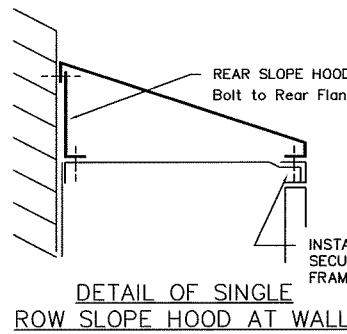
SLOPE TOP CORNER FILLER



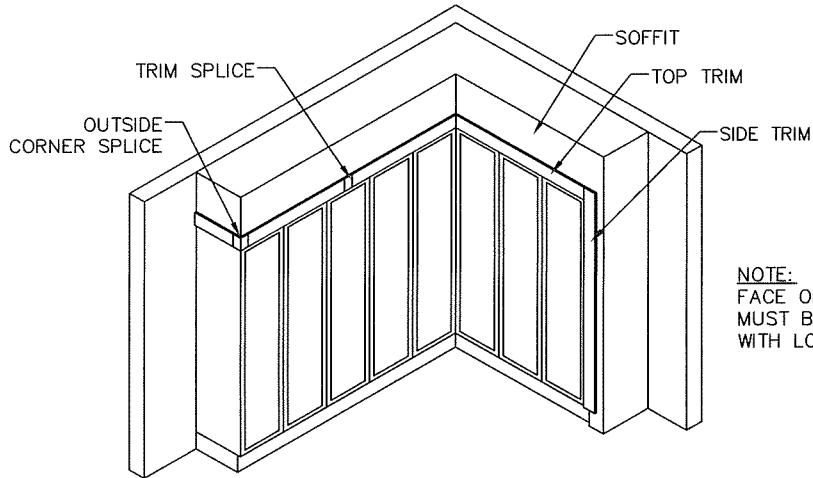
INSTALLER TO CUT HOOD TO SUIT CONDITION  
AND CONCEAL CUT EDGE UNDER SPLICE ASSY.



TYPICAL INSTALLATION

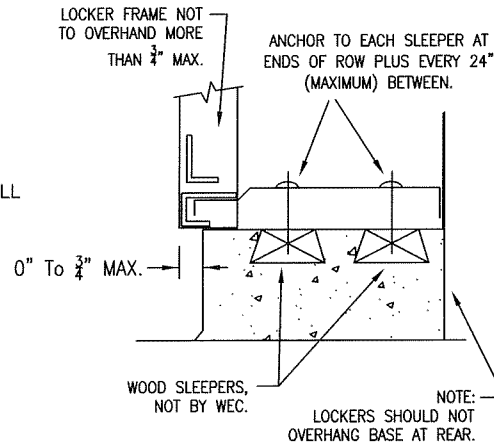


# RECESS TRIM DETAIL

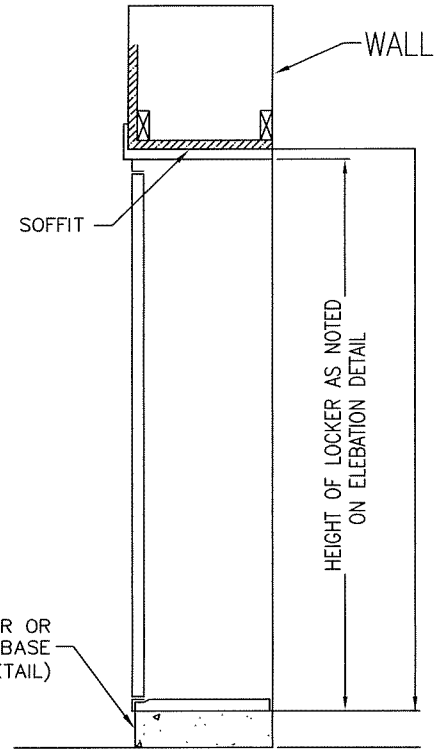


TRIM DETAILS

NOTE:  
FACE OF WINGWALL  
MUST BE FLUSH  
WITH LOCKER.



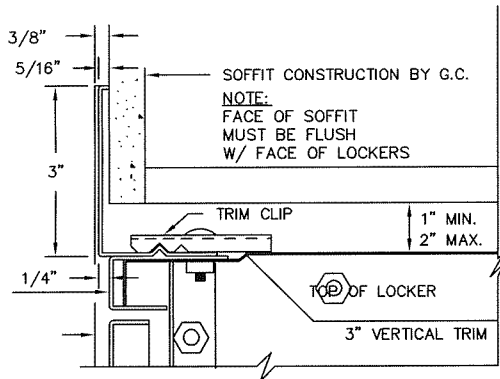
SUGGESTED BASE DETAIL



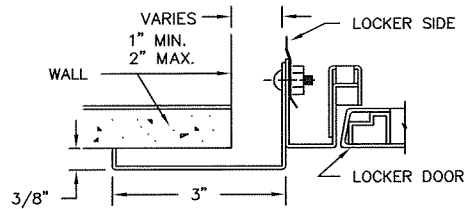
FINISHED FLOOR OR  
BOTTOM OF EXISTING BASE  
(SEE BASE DETAIL)

IF NO BASE THEN B DIMENSION TO BE FROM TOP OF FLOOR

SOFFIT ELEVATION DETAIL

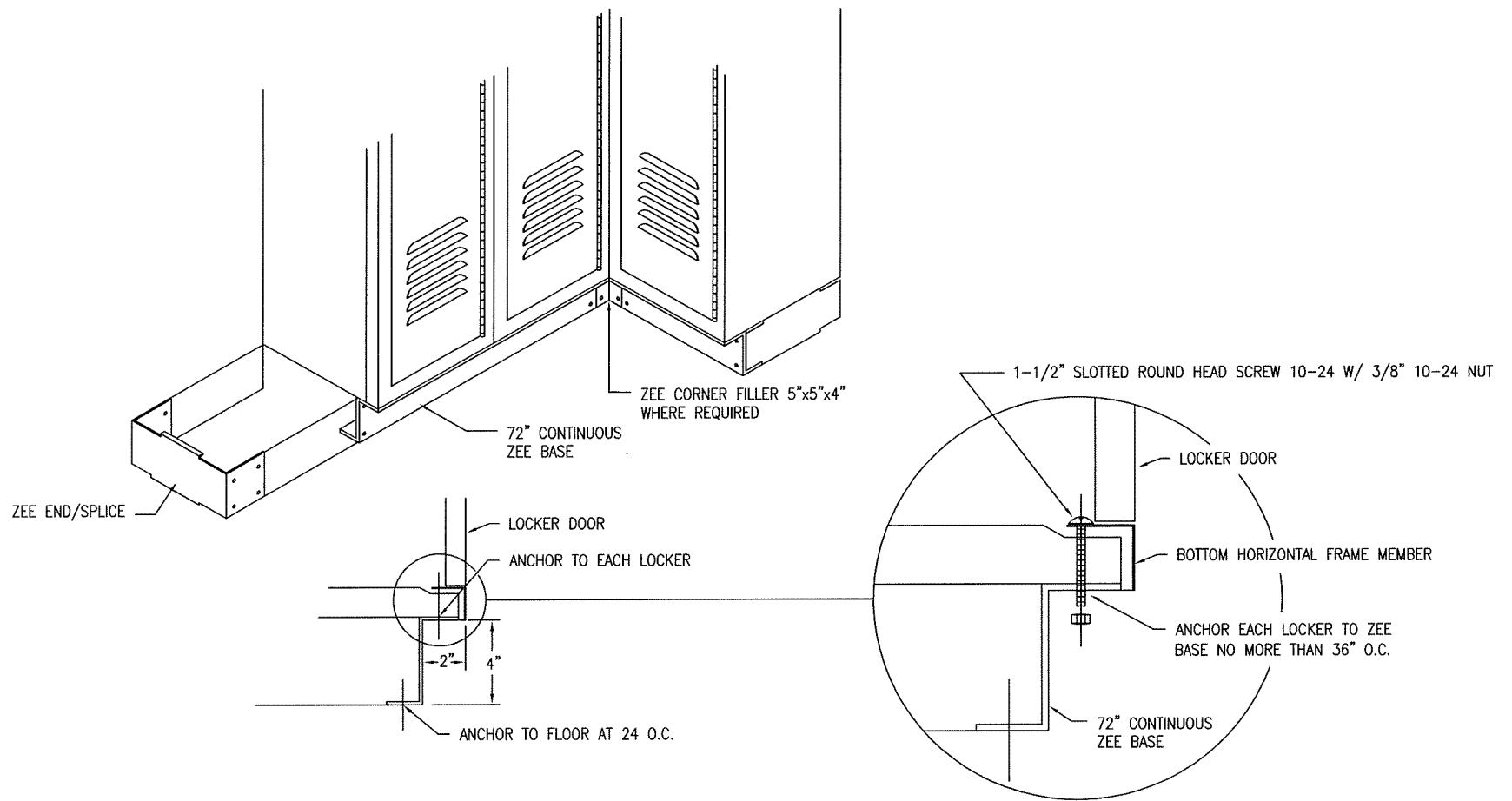


SECTION THRU TOP TRIM



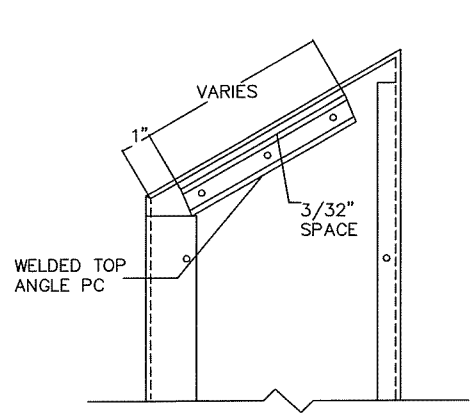
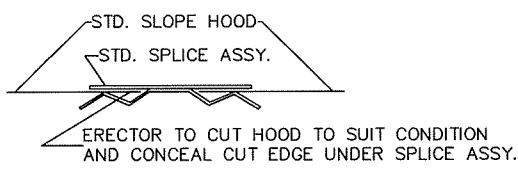
SECTION THRU VERTICAL TRIM

SECTION THRU TOP AND SIDE TRIM



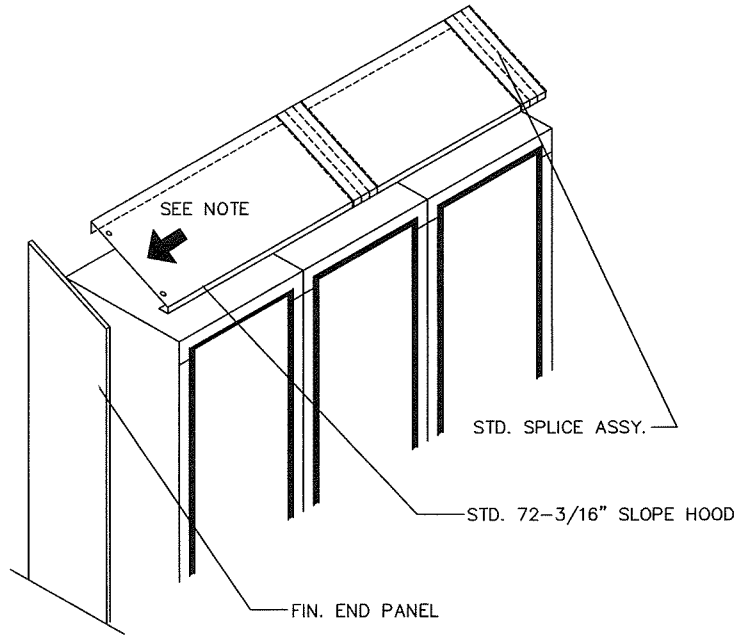
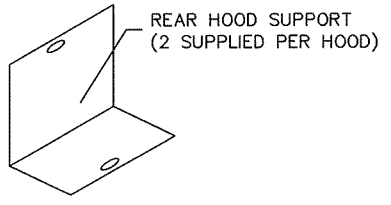
## TYPICAL ZEE BASE DETAIL

NOT TO SCALE



INSIDE FIN. END PANEL DETAIL

END OF HOOD SLIDES IN BETWEEN TOP FLANGE AND WELDED TOP ANGLE PC. (3/32" SPACE)



SLOPE FINISHED END PANEL & HOOD DETAIL